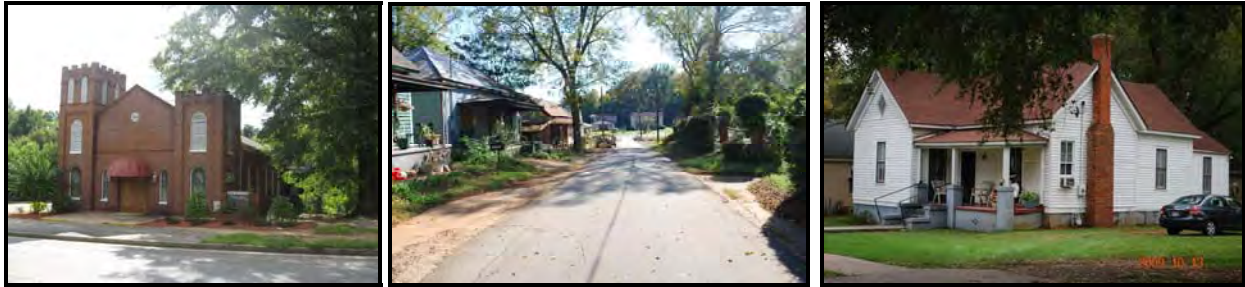


# NORTH MILLEDGEVILLE HISTORIC RESOURCES SURVEY REPORT

**MARCH 2010**



**Milledgeville, Baldwin County, Georgia**

ECA Project No. K-378-7  
HP-090324-003



**Submitted to**  
Georgia Historic  
Preservation Division  
Atlanta, Georgia

**Prepared by**  
Jaime L. Destefano, MS  
1375 Union Hill Industrial Court | Suite A  
Alpharetta, GA 30004

## North Milledgeville Historic Resources Survey

Prepared for  
**Telecom Development Services, LLC**

By

Environmental Corporation of America  
Jaime L. Destefano, MS – Principal Architectural Historian



APRIL 2010



**ENVIRONMENTAL CORPORATION OF AMERICA**  
ENVIRONMENTAL | GEOTECHNICAL | WETLANDS | ECOLOGY | CULTURAL RESOURCES

## TABLE OF CONTENTS

TABLE OF CONTENTS.....	ii
LIST OF FIGURES AND MAPS.....	iii
LIST OF TABLES.....	iv
I. PROJECT DESCRIPTION AND METHODOLOGY .....	1
II. HISTORICAL OVERVIEW.....	8
III. SURVEY RESULTS .....	10
IV. ARCHITECTURAL ANALYSIS .....	12
VI. CONDITION, INTEGRITY, AND NATIONAL REGISTER ELIGIBILITY OF EACH HISTORIC PROPERTY.....	23
VI. RECOMMENDATIONS FOR GEORGIA AND NATIONAL REGISTER DISTRICT NOMINATIONS .....	27
ATTACHMENTS.....	32



## LIST OF FIGURES AND MAPS

Figure 1.	USGS Topographic Map, 1972 Survey Area Boundaries (Scale 1:24,000) .....	3
Figure 2.	USGS Topographic Map, 1972, Survey Area Boundaries (Scale 1:12,000) .....	4
Figure 3.	Google Earth Aerial Photograph and Survey Area Boundaries (2007) .....	5
Figure 4.	Sketch Map of North Milledgeville Historic Resources Survey Area Boundaries .....	6
Figure 5.	Proposed MLK Jr. Ave. Neighborhood from 1998 City of Milledgeville Survey .....	7
Figure 6.	Map of 2010 Survey Area North of Railroad Corridor .....	7
Figure 7.	1940 Survey and Plat of Subdivision of Russell Bone Estate .....	11
Figure 8.	Craftsman-Style House in North Milledgeville (History, Inc. #23) .....	14
Figure 9.	Folk Victorian , Gabled-Wing Cottage (History, Inc. #123) .....	15
Figure 10.	Neoclassical Revival House (History, Inc. #205) .....	15
Figure 11.	Queen Anne Style House (History, Inc. #283) .....	15
Figure 12.	English Vernacular Revival, English Cottage (History, Inc. #113) .....	15
Figure 13.	Craftsman Bungalow (History, Inc. #240) .....	19
Figure 14.	Central Hall Cottage (History, Inc. #147) .....	19
Figure 15.	Extended Hall-Parlor (History, Inc. #89) .....	19
Figure 16.	Double Pen (History, Inc. #118) .....	19
Figure 17.	Gabled Wing Cottage (History, Inc. #109) .....	19
Figure 18.	Georgian Cottage (History, Inc. #271) .....	19
Figure 19.	Saddlebag House (History, Inc. #269) .....	20
Figure 20.	Shotgun House (History, Inc. #112) .....	20
Figure 21.	Double Tower Church (History, Inc. #38) .....	20
Figure 22.	Corner Store (History, Inc. #86) .....	20
Figure 23.	224 E. Walton Street (History, Inc. #264) .....	20
Figure 24.	Southerly View Down Simmons Avenue .....	22
Figure 25.	Northwesterly View Along Walton Street (Within MLK Jr. Ave. Neighborhood) .....	22
Figure 26.	Southeasterly View Down N. Liberty St. Toward Railroad Tracks .....	23
Figure 27.	Northwesterly View Toward Railroad Crossing & Storage/Garage Facilities at N. Jefferson Street .....	23
Figure 28.	Northwesterly View Along E. Hall Street Near Intersection With N. Jefferson St. .....	23
Figure 29.	Potential MLK Jr. Ave. Neighborhood/Historic District As Redefined by ECA .....	28
Figure 30.	Potential N. Milledgeville Neighborhood/Historic District .....	28
Figure 31.	Project Area Map Identifying Field Survey Block Numbers .....	34



## LIST OF TABLES

Table 1.	Breakdown of Resources by Construction Date.....	11
Table 2.	Breakdown of Resources by Original Use .....	12
Table 3.	Breakdown of Architectural Styles .....	13
Table 4.	Breakdown of Architectural Styles Surveyed North of Railroad Corridor .....	13
Table 5.	Breakdown of Resources by Architectural Type .....	17
Table 6.	Breakdown of Resources by Architectural Type – Surveyed North of Railroad Corridor.....	18
Table 7.	Breakdown of Resources by Exterior Materials.....	21
Table 8.	Breakdown of Resources by Foundation.....	21
Table 9.	Breakdown of Resources by Roofing.....	22
Table 10.	Resources Located South of Railroad Corridor That Appear to be Eligible for For Individual Listing in the National Register.....	25
Table 11.	Resources Located North of Railroad Corridor That Appear to be Eligible for For Individual Listing in the National Register.....	26
Table 12.	Breakdown of Contributing v. Noncontributing Resources within Potential N. Milledgeville Neighborhood Historic District .....	29
Table 13.	Breakdown of Contributing v. Noncontributing Resources within Potential Martin Luther King Jr. Avenue Neighborhood Historic District.....	29



## I. PROJECT DESCRIPTION AND METHODOLOGY

The North Milledgeville Historic Resources Survey was conducted as part of an effort to identify and survey all properties 50-years or older located within the northern portion of the City of Milledgeville. The survey, which may assist in future preservation planning efforts, was funded by Telecom Development Services, LLC, on behalf of CST Holdings, LLC, through a contractual agreement with the Historic Preservation Division (HPD) of the Georgia Department of Natural Resources as a mitigation measure in compliance with Section 106 of the National Historic Preservation Act of 1966. Under the agreement, all properties 50 years of age or older within the survey area were to be inventoried and entered in the Natural, Archaeological, and Historic Resources Geographic Information System (NAHRGIS) online database. The preliminary boundaries of the project area were agreed upon through consultation with the HPD. These boundaries include Martin Luther King Jr. Drive on the north, N. Jefferson Street on the east, Thomas Street on the south, and N. Columbia Street on the west (Figures 1-4). All phases of the survey were conducted by Project Manager and Principal Architectural Historian, Jaime L. Destefano of Environmental Corporation of America.

Survey procedures outlined in the Georgia Historic Resources Survey Manual provided by the Georgia Historic Preservation Division were followed throughout the North Milledgeville Historic Resources Survey. Preliminary background research of the survey area was conducted in order to identify the various types of historic properties, and general periods and patterns of development within the project area. During the background research, it was discovered that a previous historic resources survey was conducted in 1998 by Community Preservation Partners and funded by the Milledgeville Historic Preservation Commission. The resources

identified during the 1998 survey were later input into NAHRGIS, the Natural, Archaeological, and Historic Resources Geographic Information Systems online database. In May of 2000, Community Preservation Partners prepared a series of maps of potential National Register Districts based on their 1998 survey. The *Martin Luther King Jr. Avenue Neighborhood* was identified as a potential historic district. The southern half of this district lies within the boundaries of the current ECA survey area (Figures 5 and 6).

An intensive field survey was performed in which all properties determined to be 50 years or older were photographed, recorded on a Baldwin County Parcel Map, and an in-field survey form was completed for the majority of the resources. Previously identified historic resources located within the North Milledgeville survey area were resurveyed. In order to maintain an organized and systematic field survey, each block within the survey area was assigned a block number (1-28).

Following the field survey, all data and digital photographs were input in NAHRGIS beginning with the block located at the northwest corner of the project area. Forms were also completed for the resurveyed historic resources and given a secondary NAHRGIS identification number. The 1998 survey and NAHRGIS numbers were cited on each form for the resurveyed historic resources. All data and digital photos resulting from this survey can be viewed by logging onto the NAHRGIS website, [www.itos.uga.edu/nahrgis](http://www.itos.uga.edu/nahrgis), survey number 1646. In addition to entering data into NAHRGIS, a detailed inventory for ALL structures located within the survey area was created. The inventory spreadsheet includes the ECA Resource ID and Block numbers, previous NAHRGIS Survey ID (if applicable), 2010 NAHRGIS ID number (if applicable), address and street, approximate construction date, National Register eligibility, Architectural style and type



(Attachment 1). A list of all previously surveyed resources, as well as the corresponding resurvey NAHRGIS ID numbers is provided in Attachment 2.

historic resources located within the survey area have been documented by this project.

It was predetermined under the Agreement with Georgia HPD, if the number of historic properties within the survey area exceeded an anticipated 150, consultation with the HPD to resolve the difference in order to ensure a meaningful product will be required. Due to exceeding the anticipated 150 resources and the agreed subsequent consultation with the HPD, NAHRGIS forms were not completed for historic resources located north of the railroad corridor. However, all resources were photographed and included in the inventory spreadsheet in Attachment 1. The majority of these resources lie within Community Preservation Partners proposed potential Martin Luther King Jr. Avenue Neighborhood (Figure 5). Throughout this report, the survey area between the railroad corridor and Martin Luther King Jr. Drive will be referred to as the Martin Luther King (MLK) Jr. Avenue Neighborhood.<sup>1</sup>

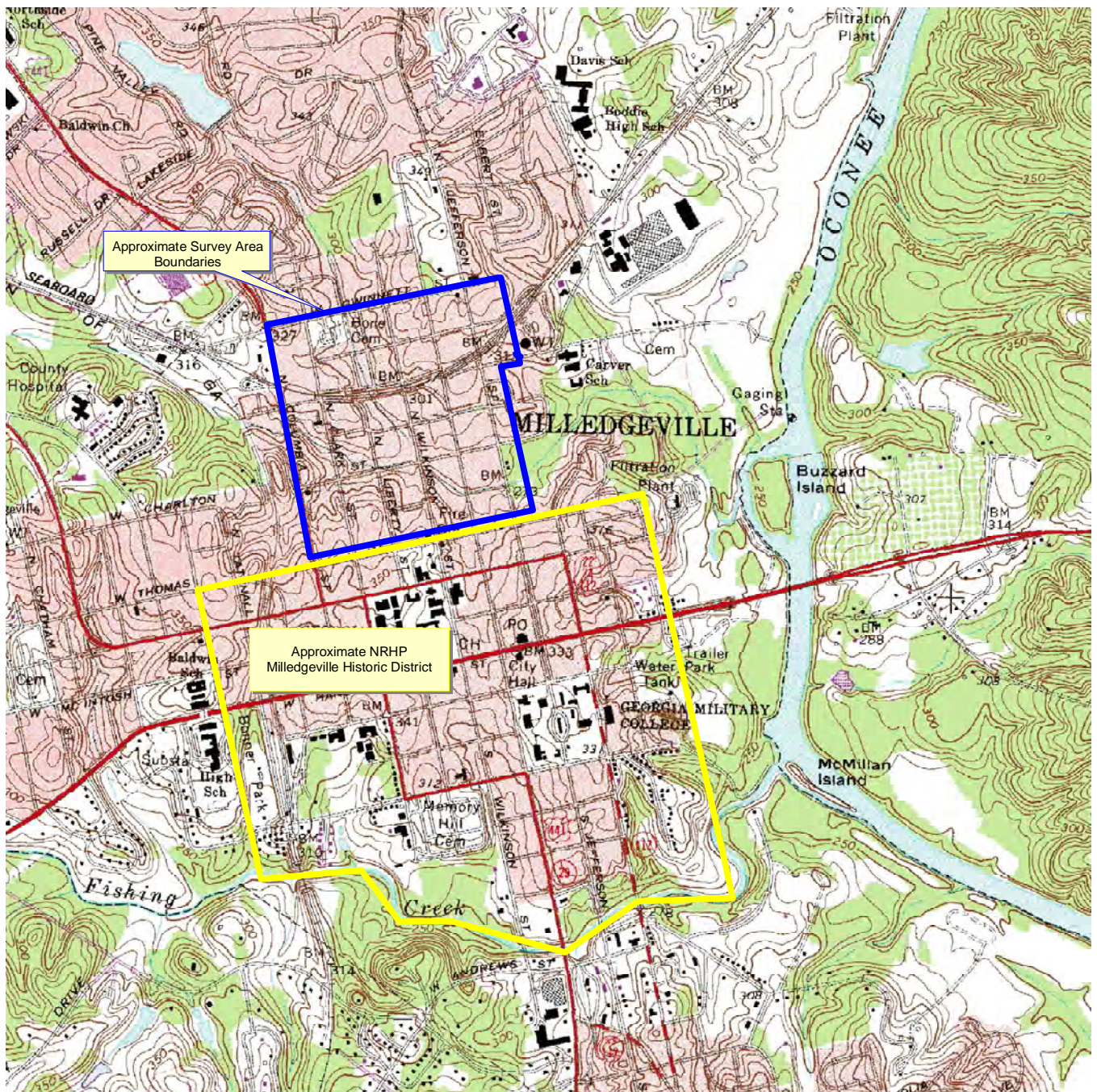
Historical information for the preparation of the developmental history of the northern part of the City of Milledgeville, as well as the background information of the individual properties, was obtained through research at the Georgia College and State University Library Special Collections, the Georgia Historic Preservation Division, the Baldwin County Courthouse, and the Historic American Building Survey.

While it is possible that a historic property may have been inadvertently omitted from this survey, whether as a result of physical changes that have obscured its historic character or to borderline age, the surveyor believes that the vast majority of

---

<sup>1</sup> The analysis of the MLK Jr. Ave. Neighborhood, as outlined by Community Preservation Partners, is limited to the southern half of the district (Figure 5). This is due to the agreement that the survey area would not extend beyond Martin Luther King Jr. Drive.





Source: USGS Topographic Quadrangle Maps, 7.5 Minute Series, Milledgeville, GA (1972, Photo Revised 1984)



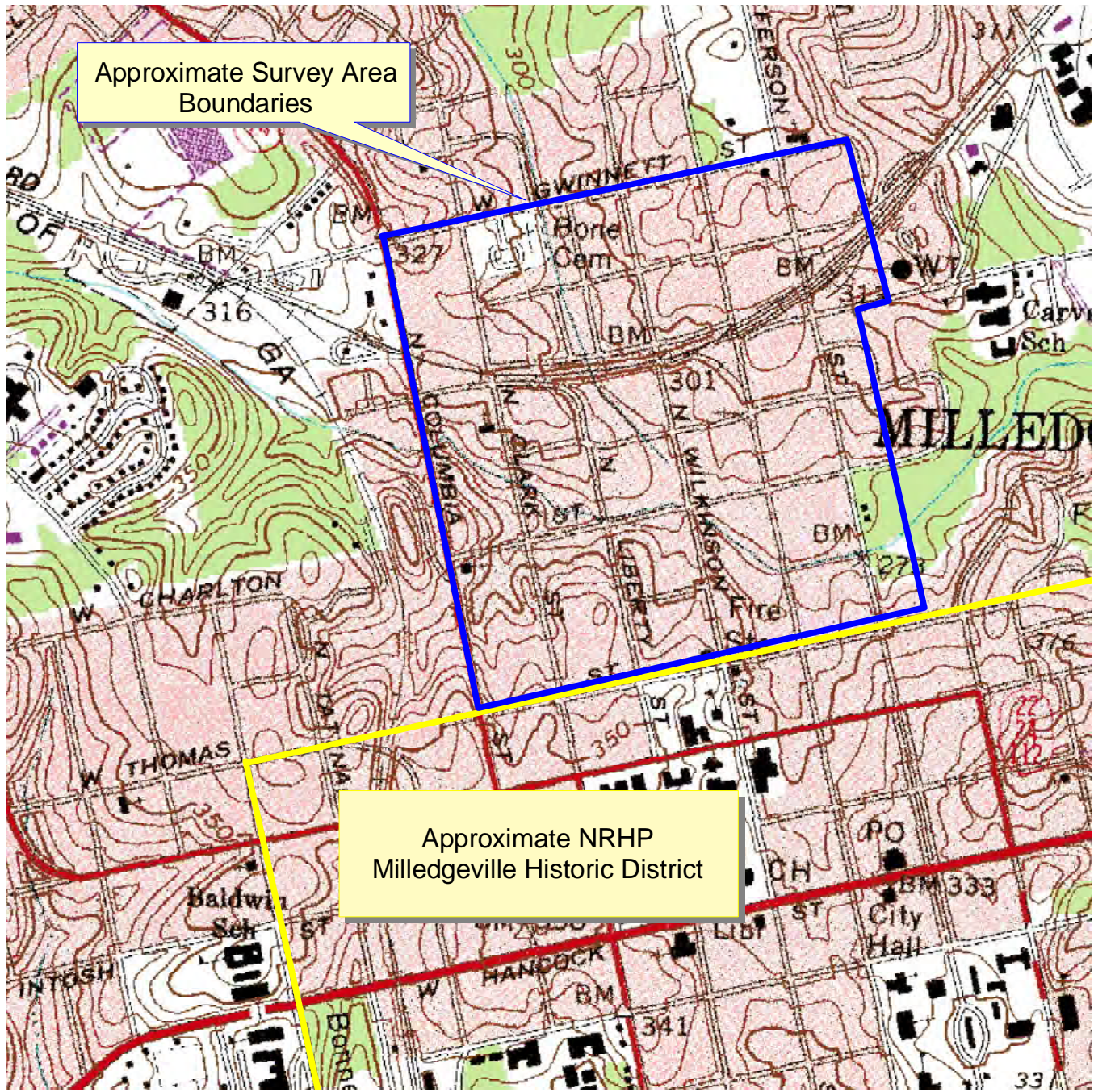
North Milledgeville Historic Resources Survey  
Milledgeville, Baldwin County, Georgia

Figure 1: Survey Area Boundaries



ECA Proj. #: K-378-7





Approximate Survey Area Boundaries

Approximate NRHP Milledgeville Historic District



Source: USGS Topographic Quadrangle Maps, 7.5 Minute Series, Milledgeville, GA (1972, Photo Revised 1984)



North Milledgeville Historic Resources Survey  
Milledgeville, Baldwin County, Georgia

Figure 2: Survey Area Boundaries



ECA Proj. #: K-378-7



Source: Google Earth Aerial Photograph (2007)

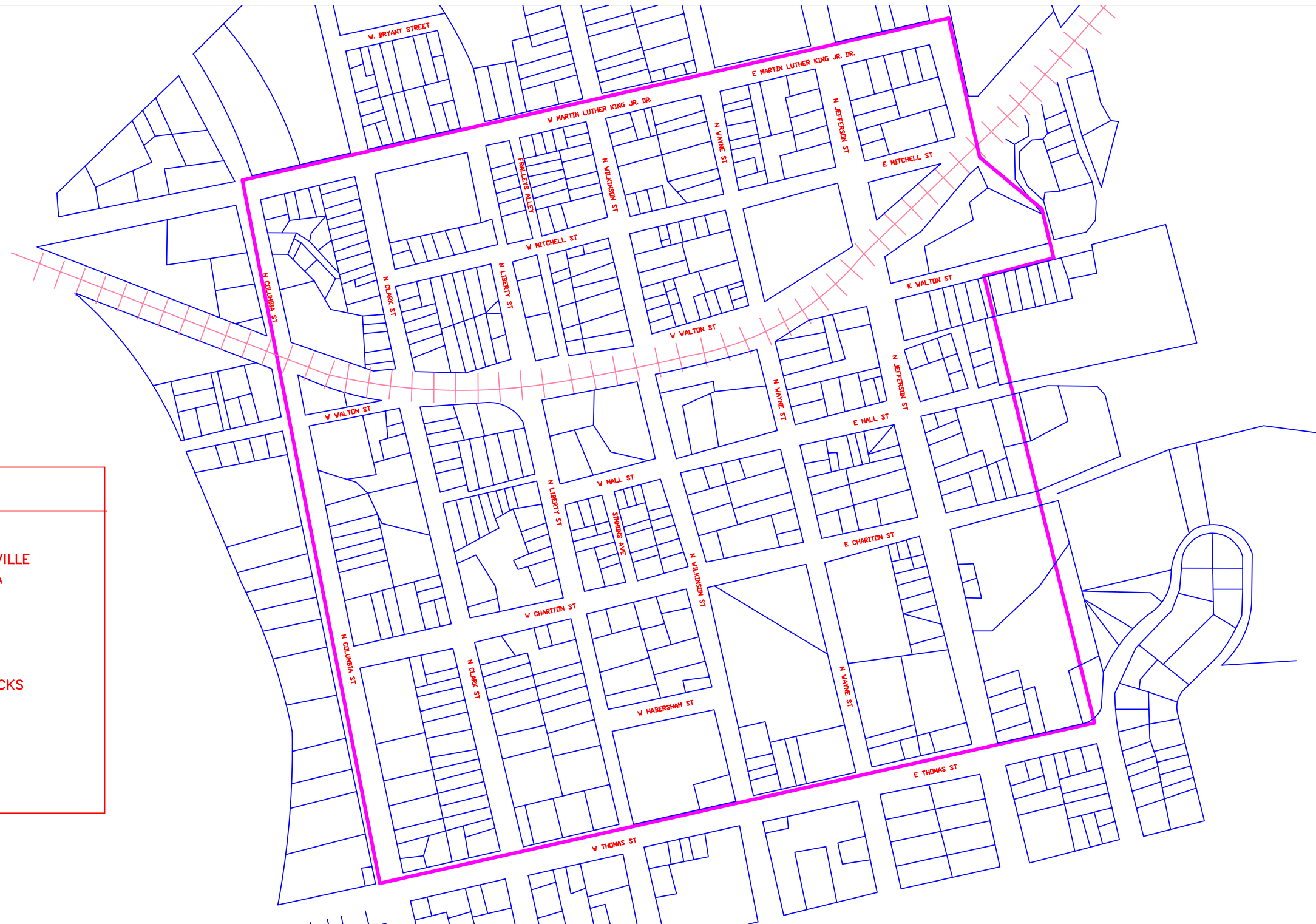


North Milledgeville Historic Resources Survey  
Milledgeville, Baldwin County, Georgia

Figure 3: 2007 Aerial Photograph and Survey Area Boundaries



ECA Proj. #: K-378-7



**LEGEND**

- N. MILLEDGEVILLE SURVEY AREA
- TAX PARCELS
- - - RAILROAD TRACKS

North Milledgeville Historic Resources Survey  
 Milledgeville, Baldwin County, Georgia  
 Figure 4: Survey Area Boundaries

NOT TO SCALE

SOURCE: ECA Site Visit, Google Earth Aerial

DRAWN BY: ETJ      DATE: 03/22/10  
 FILE NAME: F:\%k378.dwg

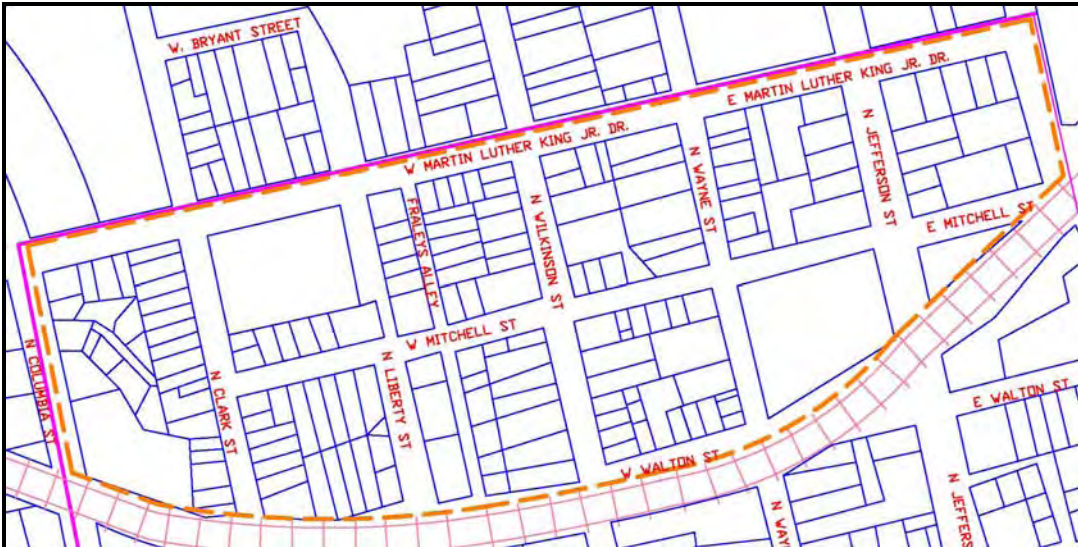


Project K-378-7

Figure 5: MLK Jr. Avenue Neighborhood Historic District - as proposed by Community Preservation Partners; 1998 City of Milledgeville Historic Resources Survey



Figure 6: 2010 Survey Area North of the Railroad Corridor – Includes Portions of the 1998 Proposed MLK Jr. Ave. Neighborhood and an Additional Block East of N. Jefferson Street and North of East Mitchell Street



## II. HISTORICAL OVERVIEW

Baldwin County, located in central Georgia, was created out of the land lottery of 1803 from lands ceded by the Creek Indians. That same year, the site of the future City of Milledgeville was chosen as the location of a new state capital due to its central location and its access to navigable waters along the west bank of the Oconee River.<sup>2</sup> The town was laid out in a traditional grid pattern with four public squares. Only two cities in the nation were originally designed and planned as cities to house seats of government – Milledgeville and Washington, D.C.<sup>3</sup> The Georgia legislature held its first meeting in 1807 at the Milledgeville statehouse, the nation’s first public building constructed in the Gothic revival style.<sup>4</sup> Throughout the Antebellum era, Milledgeville prospered as both the political and social center of Georgia.

The City of Milledgeville suffered throughout the years of the Civil War. Following the destruction of Atlanta by Union forces, Sherman entered the undefended capital of Georgia on November 22, 1864.<sup>5</sup> During the short siege of Milledgeville, the statehouse was ransacked, the state arsenal and powder magazine was destroyed, and the surrounding countryside devastated. Although the physical damage to the city of Milledgeville was minimal in comparison to that of Atlanta, it proved a humiliating blow to the citizens of Milledgeville.<sup>6</sup>

<sup>2</sup> Communication Preservation Partners (CPP), City of Milledgeville Historic Resources Survey, 1998; p.2.

<sup>3</sup> The New Georgia Encyclopedia, Baldwin County, Georgia Humanities Council and the University of Georgia Press: 2004-2010.

<sup>4</sup> The New Georgia Encyclopedia, Milledgeville, Georgia Humanities Council and the University of Georgia Press: 2004-2010.

<sup>5</sup> CPP, 1998; p.14.

<sup>6</sup> The New Georgia Encyclopedia, Milledgeville, Georgia Humanities Council and the University of Georgia Press: 2004-2010.

Following the Civil War, the state capital was moved to Atlanta in 1868 during Reconstruction. Atlanta was “a city emerging as the symbol of the New South as surely as Milledgeville symbolized the Old South.”<sup>7</sup>

During the remaining years of the 19<sup>th</sup> century, Milledgeville struggled to survive the loss of the capital. It succeeded, however, in becoming an educational center in the region with the establishment of the Middle Georgia Military and Agricultural College (later Georgia Military College) in 1879 and the Georgia Normal and Industrial College (later Georgia College and State University) founded in 1889. The establishment of these institutions significantly contributed to the prevention of the City of Milledgeville from becoming an inconsequential, provincial community in central Georgia following the Civil War.<sup>8</sup> As the city began to regain stability, population growth expanded outward from the center of town, particularly to the north.

Portions of the North Milledgeville Historic Resources Survey area is considered to be a historically African-American working class neighborhood north of the central business.<sup>9</sup> The area developed in response to both the coming of the railroad in the late-1800s as well as to the turn-of-the-century business and industrial growth nearby.<sup>10</sup> The railroad line was constructed just north of Walton Street and resulted in the development of an industrial district which provided employment opportunities for many African-Americans.<sup>11</sup> From the 1920s to the post-World War II era, the neighborhood experienced considerable growth as industry expanded. Some of the businesses that developed around the railroad include Milledgeville Ice Works, Milledgeville Cottonseed Oil Company and Mills, the Cook Lumber Company, Fowler-Flimister

<sup>7</sup> *Ibid.*

<sup>8</sup> *Ibid.*

<sup>9</sup> HABS no. GA-2247, 606 Simmons Avenue

<sup>10</sup> *Ibid.*

<sup>11</sup> *Ibid.*



Coat Company, Oconee Clay Products Company, and the Georgia Railroad Power Company.<sup>12</sup> The business district, located east of the Baldwin County Courthouse and roughly centered along N. Wayne Street and W. McIntosh Street (outside limits of the survey area), also provided nearby economic opportunities for the African-American community.<sup>13</sup> The 1913 Sanborn fire insurance map indicates the operation of two “negro restaurants,” a barber shop, a bicycle shop, grocers, warehousing, and drug stores, among others. Today, the survey area, particularly north of the railroad, continues to have a strong African-American presence. Although the predominantly residential area reflects several examples of structures constructed during the late-19<sup>th</sup> century, the majority of the historic resources demonstrate the northward expansion and development of Milledgeville as a residential community consisting of primarily early-to-mid 20<sup>th</sup> century workers’ housing.

---

<sup>12</sup> *Ibid.*

<sup>13</sup> HABS No. GA-2250, 636 North Wilkinson Street



### III. SURVEY RESULTS

A total of 327 resources were identified during the North Milledgeville Historic Resources Survey including one cemetery. 233 of these resources were determined to be 50 years old or older. Of the 233 historic resources, the 136 resources located south of the railroad corridor were input in NAHRGIS. Three previously surveyed resources were found to be demolished (NAHRGIS ID# 793, 802, and 1055). An inventory spreadsheet listing the ECA Resource ID, Block ID numbers, associated Georgia Survey ID number (if applicable), address, street, approximate construction date, National Register eligibility, style and type can be found in Attachment 1.

#### CONSTRUCTION DATES

The largest percentage of historic resources located south of the railroad corridor (now referred to as the North Milledgeville Neighborhood) was built between 1930 and 1949 with a total of 45% of historic resources and 32% of the overall number of structures being constructed during this period. An analysis of portions of the 1998 proposed Martin Luther King Jr. Avenue Neighborhood, located between the railroad corridor and MLK Jr. Drive, showed the largest percentage (36%) of all buildings were constructed during the 1940s. This is 49% of all historic resources in the surveyed portions of the MLK Neighborhood. The analysis demonstrates a period of growth at the northern edge of the City of Milledgeville during the years immediately leading up to immediately following World War II.

The following is a chronological list of the major historical time periods represented in the survey:

- ❖ New South (1870-1919) – 51 resources (15%)
- ❖ Roaring Twenties (1920-1929) – 26 (8%)
- ❖ Great Depression (1930-1939) – 42 (13%)
- ❖ World War II (1940-1949) – 79 (24%)
- ❖ Post-World War II (1950-1960) – 35 (11%)

Based on the dates of construction of standing structures located within the North Milledgeville Historic Resources Survey, it appears the area north of the railroad corridor experienced a slightly later period of development. Although this area contains several resources from the New South Era, the majority of the structures were constructed during the World War II Era and the years immediately following.

Bone Cemetery (ECA #67) is a mid-20<sup>th</sup> century African-American cemetery located within the boundaries of the potential MLK Jr. Avenue Neighborhood (Block #2). The cemetery is situated on land that once belonged to the Bone family estate. Russell Bone subdivided several blocks of his land into residential lots, reserving a single block for the establishment of a “colored cemetery” during the 1940s (Figure 7). While many of the markers date to the early-20<sup>th</sup> century, the majority reflect the growth of the community throughout the mid-20<sup>th</sup> century. The cemetery contains several unique markers and motifs.



Table 1: Breakdown of Resources by Construction Date

Period of Development	Number of Resources within N. Milledgeville Neighborhood	% within N. Milledgeville Neighborhood	Number of Resources within MLK Neighborhood*	% within MLK Neighborhood	Total	Percentage of ALL Resources
1870-1879	3	2%	0	0%	3	1%
1880-1889	4	2%	5	4%	9	3%
1890-1899	6	3%	2	1%	8	2%
1900-1909	3	2%	4	3%	7	2%
1910-1919	21	11%	2	1%	23	7%
1920-1929	18	9%	9	7%	27	8%
1930-1939	30	16%	12	9%	42	13%
1940-1949	30	16%	49	36%	79	24%
1950-1960	18	9%	17	13%	35	11%
1960+	59	31%	35	26%	94	29%
Total Number and Percentage	192	100%	135	100%	327	

\* includes resources between MLK Jr. Drive and railroad corridor

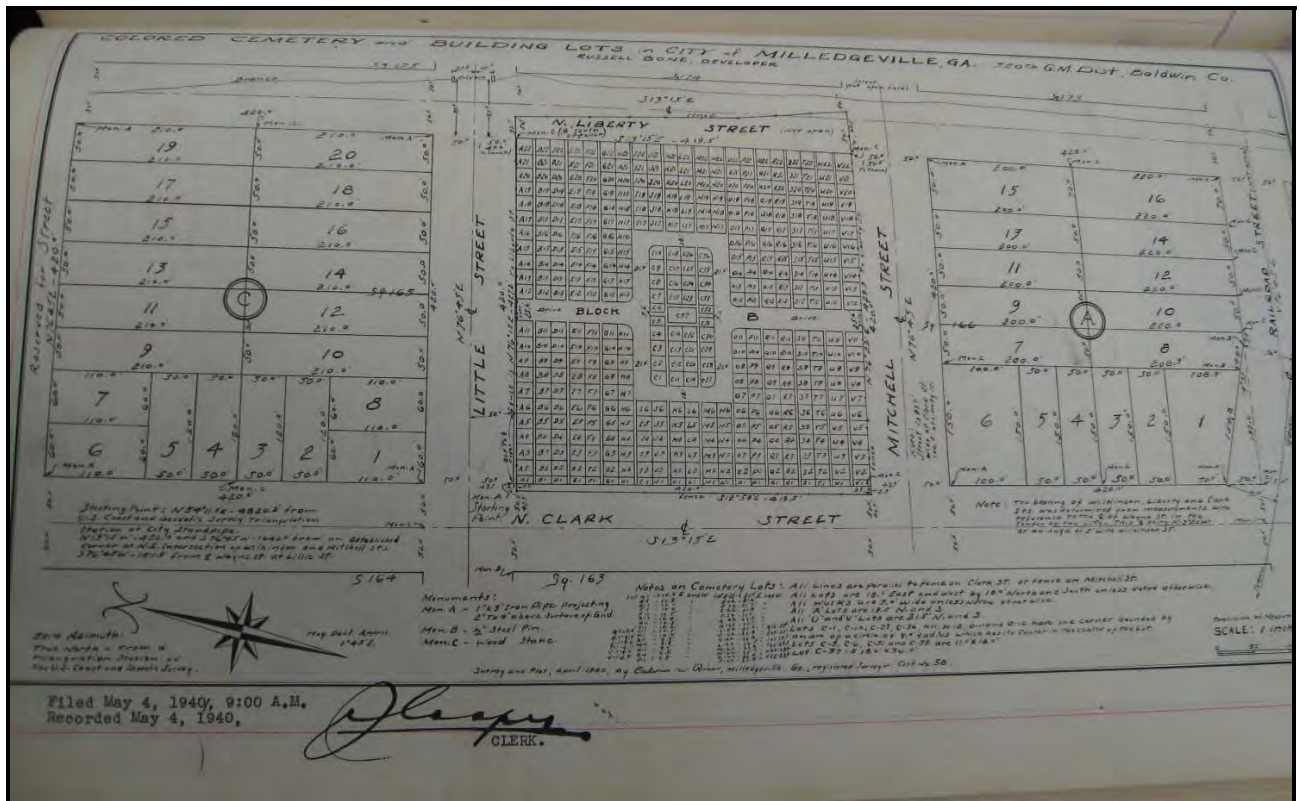


Figure 7. 1940 Survey Plat of the Subdivision of land of Russell Bone. Source: Baldwin County Deeds Office





## ORIGINAL USE

Most of the resources 50-years or older were single family residential. A total of 214 (92%) of the historic buildings surveyed fell into this category. The remaining historic resources located within the surveyed area were multi-family residential, religious, commercial/business-related, or warehousing and storage. These resources appear to have been scattered throughout the survey area; however, the commercial and warehousing structures seem to have been situated along the major thoroughfares including North Columbia and North Jefferson Streets, Martin Luther King Jr. Drive and the railroad corridor. The majority of the modern construction, primarily multi-family residential and shopping centers, appear to be located within blocks 10, 20, 25 and 26 (Figure 31); however, modern construction is apparent throughout the entire survey area.

Table 2. Breakdown of Resources by Original Use

Original Use	Number of Resources
Single Family Residential	214
Multi-Family Residential	4
Filling Station/Garage	2
Church	2
Cemetery and/or Funerary	1
Warehouse/Storage	6
Business/Office	2
Commercial/Store	2

## IV. ARCHITECTURAL ANALYSIS

The North Milledgeville Historic Resources Survey yielded a great deal of information concerning the architectural makeup of the primarily residential, African-American neighborhood located north of the National Register-listed Milledgeville Historic District. Although a previous survey completed in 1998 included portions of the current survey area, a number of additional historic resources have been identified during the course of ECA's investigations due to the admittance of resources constructed as recently as 1960 (50 years old). In addition, several previously surveyed resources have either been demolished, or altered to such an extent to which National Register eligibility reevaluation was necessary. A total of approximately 85 resources located within the current survey area were identified during the 1998 Historic Resources Survey. Three of these resources have since been demolished. Attachment 2 provides a list of the previously identified resources within the existing survey area including the former Survey and NAHRGIS ID numbers, the corresponding 2010 resource and NAHRGIS ID numbers, address, street, parcel number, construction date, and the results of the resurvey eligibility determination.

While the survey forms completed during the course of this project present specific information about each individual property, an analysis of each of the following is presented:

- ❖ Architectural Style
- ❖ Building Type
- ❖ Structural Characteristics and Building Materials

The analyses include the total survey area as agreed upon through consultation with Georgia HPD including the North Milledgeville



Neighborhood (as outlined by ECA) located south of the railroad corridor, and portions of the MLK Jr. Avenue Neighborhood, located north of the railroad. The sketch maps (Figure Nos. 4-6) outline the entire survey area, the previously identified MLK Jr. Avenue Neighborhood, and the southern portion of the neighborhood that is included in this study.

### ARCHITECTURAL STYLE

Of the 233 historic resources surveyed, only 72 (31%) of the buildings surveyed, are representative of an academic architectural style. A few residential resources were found to exhibit elements of two or more styles. In these instances, the dominant style was listed first on the NAHRGIS survey form.

Table 3: Breakdown of Architectural Styles within Entire Survey Area

Architectural Style	Number of Examples	% of All Resources
No Academic Style	160	69%
Craftsman	54	23%
Colonial Revival	1	0%
Folk Victorian	9	4%
English Vernacular Revival	2	1%
Neoclassical Revival	3	1%
Romanesque	1	0%
Queen Anne	3	1%

As indicated in Table 3, structures featuring Craftsman-style elements far exceed any other academic style consisting of 23% of all historic resources in the survey area. Folk Victorian is the second most common architectural style but only accounts for approximately 3% of all historic resources. Although a majority of the resources exhibiting stylistic influences displayed elements of a particular style, or were vernacular expressions of various styles, several high-style examples were identified during the survey as indicated in Table 3.

A breakdown of only those resources surveyed north of the railroad corridor shows somewhat similar trends with 26% of the areas historic resources featuring Craftsman-style elements and 2% featuring Folk Victorian elements.

Table 4: Breakdown of Architectural Styles within MLK Jr. Avenue Survey Area

MLK Jr. Avenue Neighborhood	
Architectural Style	Number of Examples
No Academic Style	68
Craftsman	26
Folk Victorian	2
Neoclassical Revival	2
Cemetery - No Style	1
Queen Anne	1



### Craftsman (1905-1930)

Craftsman was the dominant style for smaller houses throughout the country during the first two decades of the 20<sup>th</sup> century. Craftsman-style houses were inspired by the work of Charles Sumner and Henry Mather Greene, two California architects who designed and executed a number of highly detailed landmark buildings that combine such influences as the English Arts and Crafts movement, the wooden architecture of Japan, Swiss roof forms, and the manual arts.<sup>14</sup> The Craftsman style emphasized materials in both its structure and decorative detailing. Common features of a Craftsman style structure include wide, overhanging eaves with exposed rafter ends. A low-pitched roof is typically gabled, with hipped exceptions. Decorative brackets or braces at the eaves are common. Often times, half-timbering in the gables is incorporated, as is the addition of dormers. Porches tend to feature short, battered wood columns set on heavy masonry or brick piers extending to the ground. Windows are often multi-paned sash over a large one-pane sash. Paired and casement windows are also Craftsman-style elements.<sup>15</sup>

The Craftsman style sparked a movement toward the modern house as a break from the popular revivals of historical styles. Vernacular versions of the Craftsman style spread quickly throughout the country through the use of pattern books and popular magazines. The one-story Craftsman-style house became the most popular and fashionable smaller house style not only in Georgia, but throughout the entire United States.<sup>16</sup>

<sup>14</sup> Gerald Foster, American Houses: A Field Guide to the Architecture of the Home, (Boston: Houghton Mifflin Company, 2004), 346-349.

<sup>15</sup> *Ibid.*

<sup>16</sup> Georgia Historic Preservation Division, Residential Architectural Styles in Georgia, Georgia's Living Places: Historic Houses in Their Landscaped Settings. Atlanta: Georgia Historic Preservation Division, 1991), I-19.

### *The Craftsman style within the North Milledgeville Survey*

A total of 54 of the 233 historic resources identified within the North Milledgeville survey area featured Craftsman-style elements. This constitutes approximately 23% of all historic resources within the survey area. The majority of these structures tend to exhibit more modest elements of the Craftsman style than traditional, high-style Craftsman structures. Nearly half (26) of all historic resources featuring Craftsman-style elements are located north of the railroad track.



Figure 8: Craftsman-Style House in North Milledgeville (ECA #23)

### Folk Victorian (1870-1910)

Folk Victorian houses were common throughout the country and particularly across Georgia. Developing railroad systems allowed for the spread of Folk Victorian elements as the growing transportation routes made heavy woodworking machinery more accessible and provided local lumber yards with pre-cut detailing.<sup>17</sup> The style itself exhibits elements of Victorian decorative detailing on simple folk house forms. The Folk Victorian house is a basic house type such as a

<sup>17</sup> Virginia & Lee McAlaster, A Field Guide to American Houses, (New York: Alfred A. Knopf, Inc., 1984 and 2004), 310.



gabled ell, central hallway, or I-house.<sup>18</sup> In most instances, simple Victorian-style elements were added to an existing traditional house form thus resulting in Folk Victorian becoming a widespread architectural style.

Folk Victorian elements are primarily displayed on the porch and cornice line. Porch supports tend to be turned spindles, or square, chamfered posts. Spindework in the porch frieze is another common element of the Folk Victorian style as well as brackets and gingerbread detailing. Symmetrical facades and lack of textured wall surfaces often distinguish a Folk Victorian house from the asymmetrical and textured Queen Anne style.<sup>19</sup>

#### *The Folk Victorian style within the North Milledgeville Survey*

Only 8 of the 233 historic resources identified within the North Milledgeville survey area featured Folk Victorian-style elements. This constitutes approximately 3% of all historic resources within the survey area. Only 2 of these are located north of the railroad corridor. The majority of the Folk Victorian structures identified in the survey area are gabled-wing cottages. Folk Victorian elements are minimal and tend to be limited to the porch detailing.



Figure 9: Folk Victorian, Gabled-Wing Cottage (ECA #123)

<sup>18</sup> Georgia Historic Preservation Division, Residential Architectural Styles in Georgia, p. I-10.

<sup>19</sup> McAlaster, p. 309-310.

#### OTHER STYLES IDENTIFIED WITHIN THE NORTH MILLEDGEVILLE SURVEY AREA



Figure 10: Neoclassical Revival (ECA #205)



Figure 11: Queen Anne (ECA #283)



Figure 12: English Vernacular Revival, English Cottage (ECA #113)



## BUILDING TYPES

A total of 217 historic resources located within the North Milledgeville survey area were identified as conforming to one of the architectural types recognized by the Historic Preservation Division and identified in the Georgia Historic Resources Survey Manual.<sup>20</sup> Table 5 lists the various building types existing within the entire survey area while Table 6 includes only those located north of the railroad corridor. As indicated in Table 5, the Bungalow (42 historic resources or 18%), the Central Hall Cottage (31 historic resources or 13.3%) and the Extended Hall-Parlor (31 historic resources or 13.3%) are the most common building types identified within the survey area. Of the 42 Bungalows identified, 24 were hipped, 15 front-gabled, and 3 side-gabled. Sixteen (16) historic resources, 6.9% of the total number of historic resources surveyed, did not conform to any academic building type.<sup>21</sup>

An analysis of the historic resources surveyed within the area north of the railroad corridor, which includes portions of the potential National Register Martin Luther King Jr. Avenue Neighborhood, indicates a lesser percentage of Central Hall Cottages. Only 6 of the 100 (6%) historic resources located north of the railroad track reflect this architectural type. The Extended Hall-Parlor constitutes approximately 19% of the historic resources in this area, followed by the Bungalow with approximately 18%.

Commercial buildings located within the North Milledgeville survey area are one-part buildings, warehouses, gas stations/garages, or original single-family residential houses currently utilized for commercial purposes.

---

<sup>20</sup> Attachment C provides a general description of the most prominent architectural types found within the North Milledgeville survey area.

<sup>21</sup> Due to limited access to both the rear and interior of these buildings, the identification of Bungalow versus Extended Hall-Parlor was made primarily based on front façade, roof type and pitch, and porch.



Table 5. Breakdown of Resources by Architectural Type

Architectural Building Type	Number of Examples	% of All Historic Resources
No Academic Type	16	6.9%
Bungalow	42	18.0%
Central Hall Cottage	31	13.3%
Double Tower Church	1	0.4%
Front Gabled Church	1	0.4%
Community Store	1	0.4%
Double Pen	3	1.3%
Double Shotgun	3	1.3%
English Cottage	1	0.4%
Extended Hall-Parlor	31	13.3%
Gabled-Wing Cottage	20	8.6%
Gabled-Wing House	2	0.9%
Georgian Cottage	12	5.2%
Hall-Parlor	6	2.6%
I-House	2	0.9%
Minimal Cottage	2	0.9%
Mobile Home	1	0.4%
New South Cottage	1	0.4%
Pyramidal Cottage	3	1.3%
Ranch	19	8.2%
Saddlebag	13	5.6%
Shotgun	10	4.3%
Side Gabled Cottage	10	4.3%
Four Square	1	0.4%
Corner Store	1	0.4%



Table 6. Breakdown of Historic Resources Located within the Survey Area North of the Railroad Corridor by Architectural Type

Architectural Building Type	Number of Examples	% of All Historic Resources North of Railroad
No Academic Type	8	8.0%
Bungalow	18	18.0%
Central Hall Cottage	6	6.0%
Community Store	1	1.0%
Double Shotgun	3	3.0%
Extended Hall-Parlor	19	19.0%
Front Gabled Church	1	1.0%
Gabled-Wing Cottage	6	6.0%
Gabled-Wing House	1	1.0%
Georgian Cottage	4	4.0%
Hall-Parlor	6	6.0%
I-House	1	1.0%
Minimal Cottage	1	1.0%
Pyramidal Cottage	1	1.0%
Ranch	7	7.0%
Saddlebag	5	5.0%
Shotgun	4	4.0%
Side Gabled Cottage	7	7.0%
American Four Square	1	1.0%



REPRESENTATIVE AND UNIQUE RESIDENTIAL ARCHITECTURAL TYPES



Figure 13: Craftsman Bungalow (ECA #240)



Figure 16: Double Pen (ECA #118)



Figure 14: Central Hall Cottage (ECA #147)



Figure 17: Gabled Wing Cottage (ECA #109)



Figure 15: Extended Hall-Parlor (ECA #89)



Figure 18: Georgian Cottage (ECA #271)





## REPRESENTATIVE AND UNIQUE RESIDENTIAL ARCHITECTURAL TYPES



Figure 19: Saddlebag (ECA #269)



Figure 20: Shotgun (ECA #112)

### RELIGIOUS



Figure 21: Double Tower Church (ECA #38)

### COMMERCIAL



Figure 22: Corner Store (ECA #86)

### COMMERCIAL WAREHOUSE



Figure 23: 224 E. Walton Street (ECA #264)



## STRUCTURAL CHARACTERISTICS AND BUILDING MATERIALS

In addition to analyzing the survey data for architectural style and building type, information relating to the type of construction, height, and building materials utilized for the exterior siding and roofs of the historic buildings were examined.

Approximately 220 (51%) historic *buildings* surveyed during the North Milledgeville Historic Resources Survey are balloon frame residential structures built between 1870 and 1960. Brick was identified as the second most common type of construction with six (6) examples, followed by concrete block construction with five (5) examples.

Approximately 225, or 97% of the buildings surveyed, are one story in height. One and one half (1.5) and two (2)-story dwellings make up the remaining historic structures with the exception of one (1) spilt-level type house. One (1) resource, Bone Cemetery, was non-applicable in this category.

### Exterior Materials

Table 7 provides a breakdown of the most common exterior materials identified within the survey area. Approximately 65.5% of the resources appear to have retained their original historic siding, with 40.9% of the properties surveyed having clapboard siding, 13.4% having brick exteriors, 3.4% featuring vertical board siding, 3% having shiplap siding, and 2.2% having concrete block exteriors. A total of approximately 79 historic structures surveyed, or 33.5%, exhibit replacement, or substitute siding such as vinyl/aluminum (18.5%), asbestos and masonite (14.6%). Although asbestos is often considered a substitute siding, some of the buildings surveyed that were constructed after 1940 exhibit asbestos siding as an original cladding. Several resources also displayed multiple exterior materials. In such instances, the most prominent material is included

in Table 7 with the exception of one (1) resource that contained an equal amount of exterior materials.

Table 7: Breakdown of Resources by Exterior Materials

Exterior Materials	Number of Examples	% of All of Historic Structures
Weatherboard/Clapboard/Beveled Siding	95	40.9%
Wooded - Beaded Tongue and Groove	1	0.4%
Wood - Vertical Board	8	3.4%
Shiplap/Novelty Siding	7	3.0%
Wood Shingles	1	0.4%
Brick - Common Bond	6	2.6%
Brick - Veneer	25	10.8%
Concrete/Concrete Block	5	2.2%
Stucco	4	1.7%
Vinyl/Aluminum Siding	43	18.5%
Tarpaper/Asphalt Sheet	1	0.4%
Asbestos Siding	11	4.7%
Masonite	23	9.9%
Metal	1	0.4%
3 or More Materials	1	0.4%

### Foundations

Table 8: Breakdown of Resources by Foundation

Exterior Materials	Number of Examples	% of All of Historic Structures
Brick	138	59.5%
Concrete	40	17.2%
Brick and Concrete	20	8.6%
Unknown	34	14.7%

As detailed in Table 8, the most common foundation material identified within the survey area is brick. Used for piers, infill, and as a continuous foundation, brick as a foundation material accounts for a total of 138 resources, followed by 40 resources having concrete/concrete block. Several structures feature a combination of



brick piers with infill concrete block foundations (20 resources). The materials utilized in the foundations of 34 resources were undetermined due to the presence of vegetation or substitute materials such as vinyl siding impeding the visibility of the foundation.

**Roofing Material**

Roofing Materials	Number of Examples	% of All of Historic Structures
Asphalt Roll	5	2.2%
Built-Up Tar and Gravel	1	0.4%
Composition shingle/asphalt shingle	177	76.3%
Metal	49	21.1%

Table 9: Breakdown of Resources by Roofing

By far, the largest number of resources identified during the North Milledgeville Historic Resources Survey have asphalt shingle roofs with a total of 177, or 76.3% of the total number of historic structures. Metal roofing, including standing seam, corrugated, and pressed, is the second most common roofing material within the survey area.

## V. LANDSCAPE FEATURES AND SETTING

The survey area of the North Milledgeville Historic Resources Survey is characterized by residential houses with scattered commercial and warehousing facilities located primarily along the major thoroughfares (North Columbia Street, North Jefferson Street, and Martin Luther King Jr. Avenue). With the exception of these main roads, streets are relatively narrow with planted roadside vegetation and concrete sidewalks. Evidence of historic paths or drives was observed throughout the survey area.

The majority of the properties exhibited minimal planned plantings and drives with casual vegetational growth dominating. Only a few of the properties featured fencing. The majority of which was predominantly chain-link.



Figure 24: Southerly View Down Simmons Avenue



Figure 25: Northwesterly View Along Walton Street (MLK Jr. Ave. Neighborhood)





Figure 26: Southeasterly View Down N. Liberty Street Toward Railroad Track



Figure 27: Northwesterly View Toward Railroad Crossing and Storage/Garage Facilities at N. Jefferson Street



Figure 28: Northwesterly View Along E. Hall St. Near Intersection with N. Jefferson St.

## VI. CONDITION, INTEGRITY, AND NATIONAL REGISTER ELIGIBILITY OF EACH HISTORIC PROPERTY

A professional evaluation of the structural condition of each resource was not conducted. However, the general condition of the historic resources located within the survey area was recorded, particularly in the case of those exhibiting a visibly poor condition. Approximately 5% of the historic resources surveyed were in poor or deteriorated condition. The overall physical condition of the majority of the resources surveyed range from fair (10%) to good (80%). An additional approximate 5% of surviving historic resources were recorded as being in excellent condition<sup>22</sup>

The survival of architectural design or character significantly contributes to the overall level of integrity of historic properties.<sup>23</sup> Furthermore, the level of integrity is a key factor in making a reasonable National Register – eligibility determination.

In reviewing the breakdown of surveyed properties that appear to be individually eligible for listing on the National Register, a total of 64 were identified. All of these resources were found to possess a qualifying degree of individual significance as well as noteworthy architectural characteristics and a good level of integrity. In many instances, historic resources were excluded from National Register eligibility due to concerns of integrity, level of significance, insufficient background research, or a combination of these reasons. These resources were listed as “may be eligible” or “more information required” for National Register

<sup>22</sup> These percentages are approximations based on general physical condition noted during fieldwork.

<sup>23</sup> Gibbs, Survey Manual, p. 4.



eligibility. The following summarizes National Register eligibility determinations for the 233 historic resources located within the North Milledgeville survey area.

- ❖ Appear to be Eligible – 64 resources (27.5%)
- ❖ May Be Eligible – 110 resources (47.2%)
- ❖ More Information Required - 1 resource
- ❖ Not Eligible – 58 resources (24.9%)

The following tables (Tables 10 and 11) list the historic resources appearing to be eligible for listing in the National Register. Table 10 lists the eligible properties located south of the railroad corridor. Because these resources were entered into NAHRGIS, the chart includes the associated NAHRGIS ID Number. Both tables list the ECA Resource ID, NAHRGIS ID (Table 10 only), assigned block number, address and street.



**Table 10: Resources Located South of Railroad Corridor that Appear to be Eligible for Individual Listing in the National Register**

<b>ECA Resource ID</b>	<b>NAHRGIS #</b>	<b>Block Number</b>	<b>Address</b>	<b>Street</b>
9	230548	22	230	W. Charlton Street
12	230489	22	260	W. Charlton Street
19	227549	23	422	W. Charlton Street
20	227548	23	430	W. Charlton Street
21	227168	23	440	W. Charlton Street
22	228709	12	441	W. Charlton Street
23	227729	23	408	N. Clark Street
26	227555	23	444	N. Clark Street
30	227810	24	519	N. Clark Street
32	227551	23	536	N. Clark Street
34	227550	23	540	N. Clark Street
38	228489	12	700	N. Clark Street
78	228728	12	651	N. Columbia Street
86	229688	16	100	E. Hall Street
88	229748	16	120	E. Hall Street
89	230348	21	121	E. Hall Street
90	230388	21	131	E. Hall Street
91	229728	16	140	E. Hall Street
92	230389	21	141	E. Hall Street
93	229708	16	150	E. Hall Street
109	230068	20	120	W. Hall Street
112	230248	19	210	W. Hall Street
113	230228	19	220	W. Hall Street
115	230188	19	240	W. Hall Street
117	230168	19	250	W. Hall Street
118	229589	14	251	W. Hall Street
149	228019	27	540	N. Jefferson Street
153	230570	22	611	N. Jefferson Street
156	230574	22	631	N. Jefferson Street
158	230468	22	651	N. Jefferson Street
181	227768	24	548	N. Liberty Street
186	230008	18	640	N. Liberty Street
188	229989	18	650	N. Liberty Street
194	227790	24	440 (or 450)	N. Liberty Street
195	227751	24	536 & 542	N. Liberty Street
237	230308	19	641	Simmons Avenue
240	227791	24	329	W. Thomas Street
264	228488	11	224	E. Walton Street
270	230434	21	601	N. Wayne Street
283	229808	16	741	N. Wayne Street
299	227868	26	411	N. Wilkinson Street
300	227869	26	417	N. Wilkinson Street
304	227848	25	510	N. Wilkinson Street

**Table 11: Resources Located North of the Railroad Corridor that Appear to be Eligible for Listing in the National Register**

<b>ECA Resource ID</b>	<b>NAHRGIS #</b>	<b>Block Number</b>	<b>Address</b>	<b>Street</b>
50	NA	7	831	N. Clark Street
53	NA	1	840	N. Clark Street
103	NA	3	931	Fraley Avenue
105	NA	3	941	Fraley Avenue
168	NA	5	910	N. Jefferson Street
205	NA	5	115	E. Martin Luther King Jr.
207	NA	6	211	E. Martin Luther King Jr.
210	NA	9	110	W. Mitchell Street
249	NA	9	121	W. Walton Street
251	NA	9	151	W. Walton Street
287	NA	5	901	N. Wayne Street
289	NA	5	911	N. Wayne Street
291	NA	5	921	N. Wayne Street
292	NA	5	931	N. Wayne Street
294	NA	5	961	N. Wayne Street
295	NA	4	970	N. Wayne Street
315	NA	8	824	N. Wilkinson Street
316	NA	8	834	N. Wilkinson Street
317	NA	8	840	N. Wilkinson Street
320	NA	9	851	N. Wilkinson Street
321	NA	8	852	N. Wilkinson Street

## VI. RECOMMENDATIONS FOR GEORGIA AND NATIONAL REGISTER DISTRICT NOMINATIONS

The North Milledgeville Historic Resources Survey included the resurvey of historic properties previously identified during the 1998 City of Milledgeville Historic Resources Survey. Of the previously identified resources, three (3) were found to have been demolished. A number of the resources have lost integrity and no longer appear to meet National Register eligibility criteria. Others were found to have been well preserved. Because more than a decade has passed since the 1998 survey, a large number of previously unsurveyed historic resources are now 50 years old.<sup>24</sup> The entire survey area reflects a predominantly African-American community mostly featuring small, one-story residential vernacular dwellings with minimal stylistic detailing.

While many of the resources may be individually eligible for listing in the National Register, it is reasonable to consider the potential of two district nominations. (1) The North Milledgeville Neighborhood, bordered by Thomas Street on the south and the railroad corridor/Walton Street on the north. (2) The Martin Luther King Jr. Avenue Neighborhood (north of the railroad corridor) (See Figures 28 and 29).

### North Milledgeville Neighborhood

Although there are many modern intrusions located within the potential North Milledgeville Neighborhood, the distribution of these structures appears to be localized along the major thoroughfares and on blocks centered within the potential district (Particularly blocks 20, 25, and

26). As such, proposing alternate boundaries for this potential district to exclude modern structures from a National Register nomination is difficult. It should be noted, however, that a number of these resources are nearing the 50-year threshold and could be considered contributing elements in the near future. Based on the ECA survey and analysis, the northern boundary of the potential district should extend to the north side of Walton Street to include portions of the existing railroad track. Because there is not a clear distinction in architectural style, type, or setting between the two potential districts, the railroad track provides a well-defined boundary between the North Milledgeville Neighborhood and the Martin Luther King Jr. Avenue Neighborhood.

### Martin Luther King Jr. Avenue Neighborhood

The 1998 survey identified the Martin Luther King Jr. Avenue Neighborhood as a potential National Register historic district. Because the entire district as outlined by Communication Preservation Partners is not included in the current project area, ECA recommends that the portions of the district located north of the 2010 survey area be reevaluated for National Register-eligibility as an early-to mid-twentieth century, African-American neighborhood. The 2010 evaluation of the southern portion of the potential MLK Jr. Ave. Neighborhood supports the presence of a potential historic district. While there are several clusters of early-20<sup>th</sup> century historic properties located within this neighborhood, the majority of the resources, including Bone Cemetery were developed during the 1940s and 50s suggesting a ‘boom period’ during the years leading up to and immediately following World War II.

<sup>24</sup> See Attachment 2 for a list of the historic resources identified during the 1998 City of Milledgeville Historic Resources Survey.







Figure 29: Potential Martin Luther King Jr. Avenue Neighborhood, National and Georgia Register Historic District; Boundaries assessed through review of 1998 City of Milledgeville determinations and a 2010 evaluation of the area between MLK Jr. Avenue and the railroad corridor.

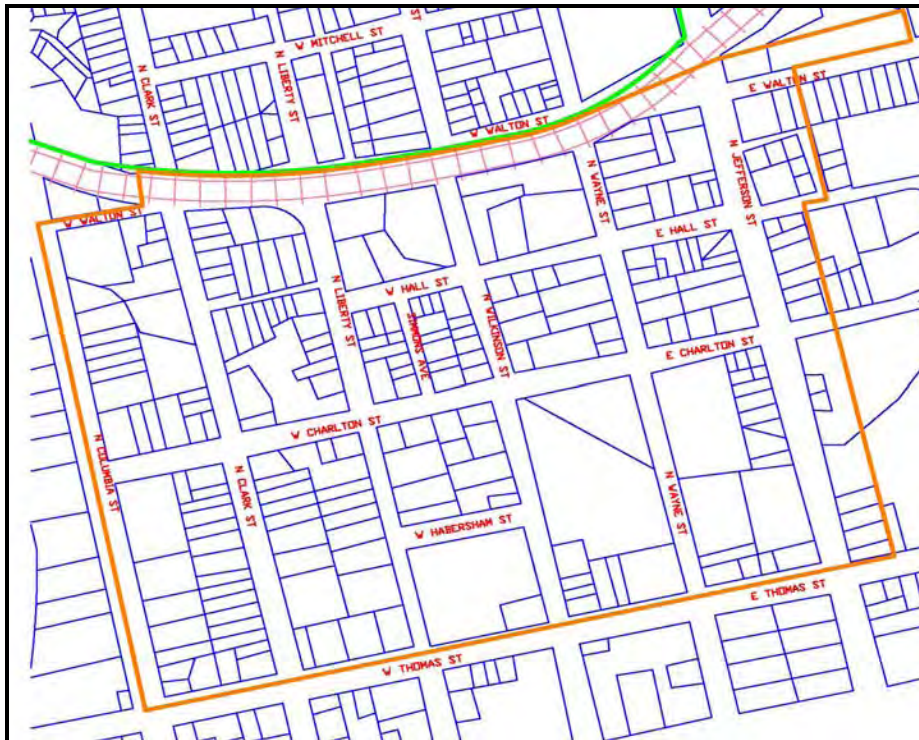


Figure 30: Potential North Milledgeville Neighborhood Historic District



Based on the North Milledgeville Historic Resources Survey, ECA recommends the inclusion of an additional block (Block 6) into the district and the exclusion of Block 10 (See Survey Block Map in Attachment 1). Block 6 includes two early-20<sup>th</sup> century Georgian Cottages and four mid-20<sup>th</sup> century resources. Of these 6 resources, 4 were found to be contributing to the historic district. The elimination of Block 10 is recommended as the entire block is noncontributing to the integrity of the district. It is important to note, that this project did not extend beyond Martin Luther King Jr. Avenue. As such, portions of the proposed district as outlined in the 1998 survey will need to be reevaluated prior to any National Register nomination.

The following tables provide a breakdown of contributing and noncontributing resources for each of the potential historic districts. These determinations are based on the overall character and integrity each resource evokes with relation to the potential districts. A total of 123, or 64% of all structures located within the North Milledgeville Neighborhood are considered to exhibit qualities that contribute to the historic integrity of the potential district. A total of 90 resources (67%) located within the MLK Jr. Avenue Neighborhood, south of MLK JR. Avenue, are contributing.

North Milledgeville Neighborhood	
Contributing	123
Noncontributing	69

Table 12: Breakdown of Contributing v. Noncontributing Resources within the Potential North Milledgeville Neighborhood

MLK Jr. Avenue Neighborhood (South of MLK Jr. Avenue)	
Contributing	90
Noncontributing	44*

Table 13: Breakdown of Contributing v. Noncontributing Resources located south of MLK Jr. Avenue and within the Potential MLK Jr. Avenue Neighborhood \*This number does not include the structure within Block 10. As such, the total number of resources in the potential MLK Jr. Avenue Neighborhood (south of MLK Jr. Drive) is 134.



## VII. BIBLIOGRAPHY

Baldwin County Probate Records. Wills, deeds, and plats. Baldwin County Court House, Milledgeville, Georgia.

Community Preservation Partners

1998 City of Milledgeville Historic Resources Survey. Funded by Milledgeville Historic Preservation Commission and the Georgia Historic Preservation Division.

Community Preservation Partners

2000 City of Milledgeville Historic Resources Survey – Proposed National Register Districts and Current District Amendment Maps.

Foster, Gerald

2004 American Houses: A Field Guide to the Architecture of the Home. Boston: Houghton Mifflin Company.

Gibbs, Kenneth

1996. Georgia Historic Resources Survey Manual. Atlanta: Georgia Department of Natural Resources Historic Preservation Division.

Georgia Historic Preservation Division (GA HPD)

1991 *Residential Architectural Styles in Georgia*. Georgia's Living Places: Historic Houses in Their Landscaped Settings.

Georgia Historic Preservation Division (GA HPD)

1997. Historic House Types in Georgia. Atlanta: Georgia Department of Natural Resources Historic Preservation Division.

Georgia State University (GSU), Students of the Masters of Heritage Preservation Program

2001 *Atlanta Housing 1944 to 1965: Case Studies in Historic Preservation*. Atlanta: Georgia State University.

Kissane, John A. and Leslie N. Sharp.

1993 Historic American Building Survey No. GA-2247: 605 Simmons Avenue (House), Milledgeville, Baldwin County. Gainesville, GA: The Jaeger company.

Kissane, John A. and Leslie N. Sharp.

1993 Historic American Building Survey No. GA-2250: 636 North Wilkinson Street (House), Milledgeville, Baldwin County. Gainesville, GA: The Jaeger company.

McAlester, Virginal and Lee.

2005. A Field Guide to American Houses. New York: Alfred A. Knopf, Inc.



The New Georgia Encyclopedia

2004-2010 Milledgeville. Georgia Humanities Council and the University of Georgia Press.  
Retrieved from [www.georgiaencyclopedia.org](http://www.georgiaencyclopedia.org), October 2009.

The New Georgia Encyclopedia

2004-2010 Baldwin County. Georgia Humanities Council and the University of Georgia Press.  
Retrieved from [www.georgiaencyclopedia.org](http://www.georgiaencyclopedia.org), October 2009.



**ENVIRONMENTAL CORPORATION OF AMERICA**

ENVIRONMENTAL | GEOTECHNICAL | WETLANDS | ECOLOGY | CULTURAL RESOURCES

## ATTACHMENTS

- Attachment 1: Inventory Summary Spreadsheet and Survey Block Map**
- Attachment 2: Inventory of Resources Identified in 1998 City of Milledgeville Survey**
- Attachment 3: Glossary of Common Architectural Descriptions and Types**



**ENVIRONMENTAL CORPORATION OF AMERICA**

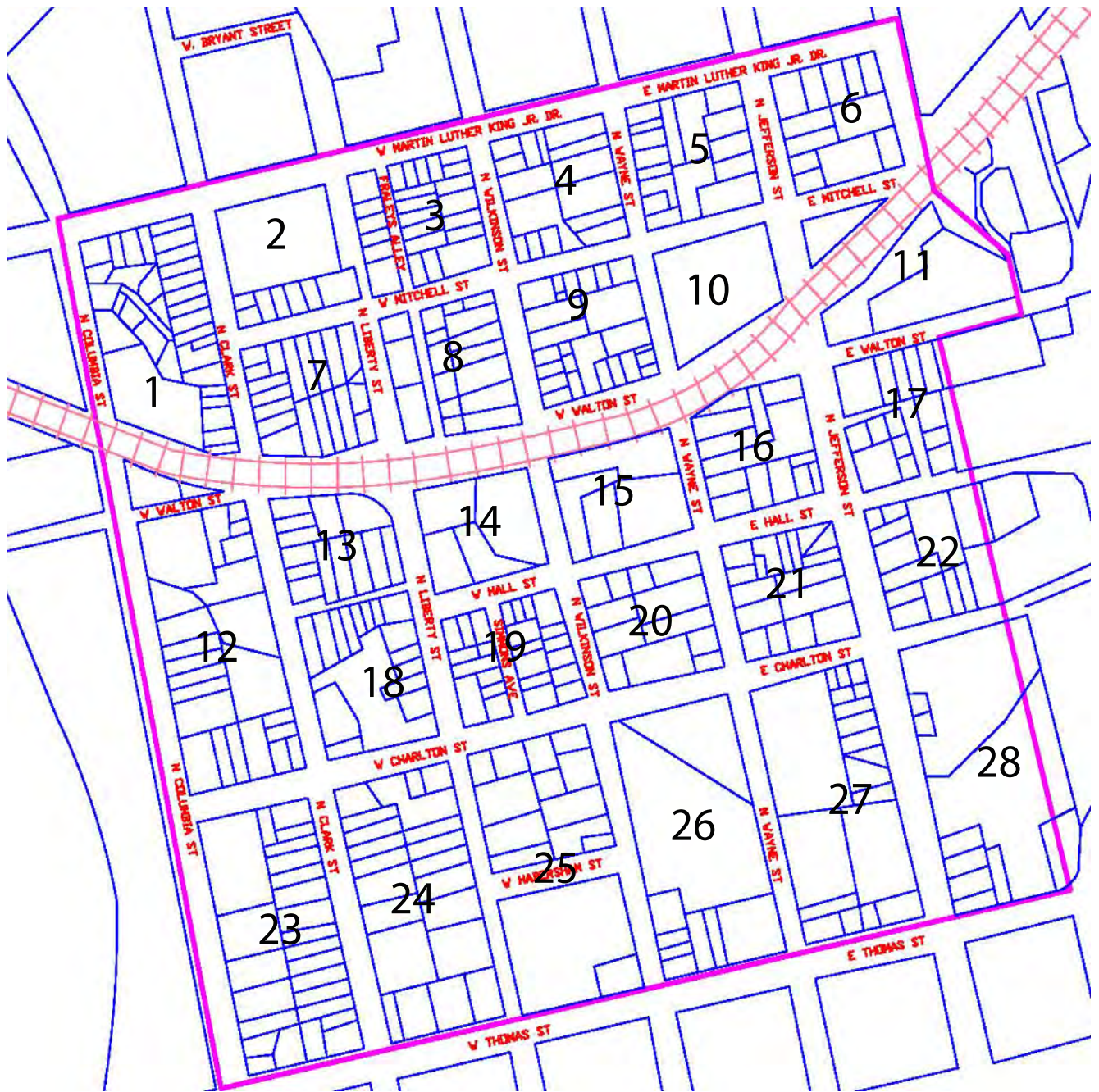
ENVIRONMENTAL | GEOTECHNICAL | WETLANDS | ECOLOGY | CULTURAL RESOURCES

**Attachment 1: Inventory Summary Spreadsheet**



**ENVIRONMENTAL CORPORATION OF AMERICA**

ENVIRONMENTAL | GEOTECHNICAL | WETLANDS | ECOLOGY | CULTURAL RESOURCES



Source: Environmental Corporation of America Base Map based on Field Notes and Tax Parcel Map



North Milledgeville Historic Resources Survey  
 Milledgeville, Baldwin County, Georgia  
 Figure 31: Field Survey Blocks



ECA Proj. #: K-378-7

**NORTH MILLEDGEVILLE HISTORIC RESOURCES SURVEY**

ECA Resource ID	Block Number	NAHRGIS #	Address	Street	Parcel Number	Contributing / Noncontributing	Construction Date	NR Eligibility Determination	Previous Survey # (If Applicable)	Previous NAHRGIS Resource # (If Applicable)	Style (if historic resource)	Type (if historic resource)	Original Use
21	23	227168	440	W. Charlton Street	M58 083	C	1930-1939	Eligible	BL-M-660	1034	No Academic Style	Extended Hall-Parlor	Single Family Residential
20	23	227548	430	W. Charlton Street	M58 082	C	1940-1949	Eligible	BL-M-659	1033	No Academic Style	Bungalow - Hip	Single Family Residential
19	23	227549	422	W. Charlton Street	M58 081	C	1940-1949	Eligible	BL-M-658	1032	No Academic Style	Central Hall Cottage	Single Family Residential
34	23	227550	540	N. Clark Street	M58 078	C	1930-1939	Eligible	NA	NA	No Academic Style	Side Gabled Cottage	Single Family Residential
32	23	227551	536	N. Clark Street	M58 077	C	1920-1929	Eligible	NA	NA	No Academic Style	Shotgun	Single Family Residential
31	23	227552	530	N. Clark Street	M58 076	C	1910-1919	May be Eligible	NA	NA	No Academic Style	Central Hall Cottage	Single Family Residential
70	23	227553	500-510	N. Clark Street	M58 075	C	1930-1939	May be Eligible	NA	NA	No Academic Style	Saddlebag	Single Family Residential
27	23	227554	450	N. Clark Street	M59 059	C	1950-1959	Not Eligible	NA	NA	No Academic Style	Bungalow - Hip	Single Family Residential
26	23	227555	444	N. Clark Street	M59 060	C	1940-1949	Eligible	BL-M-403	775	Craftsman - Elements	Bungalow - Hip	Single Family Residential
25	23	227556	430	N. Clark Street	M59 062	C	1920-1929	May be Eligible	BL-M-402	774	No Academic Style	Double Pen	Single Family Residential
243	23	227668	411	W. Thomas Street	M59 066	C	1920-1929	May be Eligible	NA	NA	Craftsman - Elements	bungalow - side Gabled	Single Family Residential
24	23	227728	416	N. Clark Street	M59 064	C	1940-1949	May be Eligible	NA	NA	No Academic Style	Central Hall Cottage	Single Family Residential
23	23	227729	408	N. Clark Street	M59 065	C	1920-1929	Eligible	BL-M-401	773	Craftsman - Elements	Bungalow - Side Gabled	Single Family Residential
244	23	227730	431	W. Thomas Street	M59 067	C	1940-1949	May be Eligible	NA	NA	Colonial Revival	Central Hall Cottage	Single Family Residential
71	23	227731	401	N. Columbia Street	M59 054	C	1940-1949	May be Eligible	NA	NA	No Academic Style	Gabled-Wing Cottage	Single Family Residential
72	23	227732	411	N. Columbia Street	M59 055	NC	1930-1939	Not Eligible	NA	NA	No Academic Style	Side Gabled Cottage	Single Family Residential
73	23	227748	421	N. Columbia Street	M59 056	NC	1930-1939	Not Eligible	NA	NA	No Academic Style	Gabled-Wing Cottage	Single Family Residential
74	23	227749	425	N. Columbia Street	M59 057	C	1950-1959	May be Eligible	NA	NA	No Academic Style	Ranch - Linear	Single Family Residential
14	24	227750	330	W. Charlton Street	M59 080	C	1910-1919	May be Eligible	NA	NA	Craftsman - Elements	Bungalow - Front Gabled	Single Family Residential
195	24	227751	536 & 542	N. Liberty Street	M59 060	C	1920-1929	Eligible	BL-M-416	788	No Academic Style	Shotgun	Single Family Residential
181	24	227768	548	N. Liberty Street	M59 082	C	1910-1919	Eligible	BL-M-415	787	Craftsman - Elements	bungalow - hip	Single Family Residential
180	24	227769	528	N. Liberty Street	M59 080A	C	1940-1949	May be Eligible	NA	NA	Craftsman - Elements	Gabled-Wing Cottage	Single Family Residential
178	24	227788	510	N. Liberty Street	M59 084	C	1950-1959	May be Eligible	NA	NA	No Academic Style	Ranch	Single Family Residential
176	24	227789	500	N. Liberty Street	M59 085	C	1940-1949	Not Eligible	BL-M-417	789	Craftsman - Elements	Bungalow - Hip	Single Family Residential
194	24	227790	440 (or 450)	N. Liberty Street	M59 086	C	1910-1919	Eligible	BL-M-418	790	No Academic Style	Central Hall Cottage	Single Family Residential
240	24	227791	329	W. Thomas Street	M59 089	C	1940-1949	Eligible	BL-M-412	784	Craftsman - Elements	Bungalow - Hip	Single Family Residential
241	24	227792	341	W. Thomas Street	M59 090	C	1940-1949	May be Eligible	BL-M-413	785	English Vernacular Revival	Central Hall Cottage	Single Family Residential
242	24	227808	351	W. Thomas Street	M59 069	C	1940-1949	Not Eligible	BL-M-414	786	Craftsman - Elements	Bungalow - Front Gabled	Single Family Residential
28	24	227809	451	N. Clark Street	M59 072	C	1910-1919	May be Eligible	NA	NA	No Academic Style	Central Hall Cottage	Single Family Residential



**NORTH MILLEDGEVILLE HISTORIC RESOURCES SURVEY**

ECA Resource ID	Block Number	NAHRGIS #	Address	Street	Parcel Number	Contributing / Noncontributing	Construction Date	NR Eligibility Determination	Previous Survey # (If Applicable)	Previous NAHRGIS Resource # (If Applicable)	Style (if historic resource)	Type (if historic resource)	Original Use
30	24	227810	519	N. Clark Street	M59 074	C	1930-1939	Eligible	NA	NA	No Academic Style	Central Hall Cottage	Single Family Residential
33	24	227811	537	N. Clark Street	M59 076	C	1930-1939	Not Eligible	NA	NA	No Academic Style	Ranch - Linear	Single Family Residential
35	24	227812	541	N. Clark Street	M59 077	C	1930-1939	May be Eligible	NA	NA	Folk Victorian elements	Georgian Cottage	Single Family Residential
36	24	227828	545	N. Clark Street	M59 078	C	1940-1949	Not Eligible	NA	NA	No Academic Style	Bungalow - Front Gabled	Multi-Family Residential
304	25	227848	510	N. Wilkinson Street	M59 118	C	1940-1949	Eligible	BL-M-419	791	Craftsman - Elements	Bungalow - Front Gabled	Single Family Residential
299	26	227868	411	N. Wilkinson Street	M59 129	C	1910-1919	Eligible	BL-M-422	794	Craftsman - Elements	Georgian Cottage	Single Family Residential
300	26	227869	417	N. Wilkinson Street	M59 128	C	1910-1919	Eligible	NA	NA	No Academic Style	Gabled-Wing Cottage	Single Family Residential
4	27	228015	131	E. Charlton Street	M81 029	C	1940-1949	May be Eligible	NA	NA	No Academic Style	Extended Hall-Parlor	Single Family Residential
150	27	228018	550	N. Jefferson Street	M81 031		1950-1959	Not Eligible	NA	NA	No Academic Style	Bungalow - Hip	Single Family Residential
149	27	228019	540	N. Jefferson Street	M81 032	C	1890-1899	Eligible	BL-M-431	803	No Academic Style	Georgian Cottage	Single Family Residential
147	27	228021	530	N. Jefferson Street	M81 033	C	1910-1919	May be Eligible	BL-M-432	804	Craftsman - Elements	Central Hall Cottage	Single Family Residential
144	27	228023	520	N. Jefferson Street	M81 034	C	1920-1929	Not Eligible	BL-M-433	805	No Academic Style	Central Hall Cottage	Single Family Residential
143	27	228028	514	N. Jefferson Street	M81 035	NC	1950-1959	Not Eligible	NA	NA	No Academic Style	Ranch - Composite	Single Family Residential
140	27	228048	430	N. Jefferson Street	M81 038	C	1950-1959	May be Eligible	NA	NA	No Academic Style	NA	Warehouse
247	27	228049	130	E. Thomas Street	M59 139	C	1910-1919	May be Eligible	BL-M-423	795	No Academic Style	Pyramidal Cottage	Single Family Residential
246	27	228068	120	E. Thomas Street	M59 140	C	1910-1919	May be Eligible	NA	NA	No Academic Style	Gabled-Wing Cottage	Single Family Residential
266	27	228069	415	N. Wayne Street	M81 144	C	1950-1959	More Info Required	NA	NA	No Academic Style	NA	Gas Station/Garage
137	28	228088	401	N. Jefferson Street	M82 003	C	1910-1919	May be Eligible	BL-M-456	828	Folk Victorian elements	Gabled-Wing Cottage	Single Family Residential
145	28	228089	527	N. Jefferson Street	M81 040	C	1950-1959	May be Eligible	NA	NA	No Academic Style	Ranch - Minimal	Single Family Residential
146	28	228108	529	N. Jefferson Street	M81 041	C	1950-1959	May be Eligible	NA	NA	No Academic Style	Ranch - Minimal	Single Family Residential
264	11	228488	224	E. Walton Street	M80 093	C	1880-1889	Eligible	BL-M-700	1074	No Academic Style	NA	Warehouse
38	12	228489	700	N. Clark Street	M58 066	C	1939	Eligible	BL-M-652	1026	Romanesque	Church - Double Tower	Church
37	12	228688	610	N. Clark Street	M58 063	C	1930-1939	May be Eligible	BL-M-653	1027	No Academic Style	Extended Hall-Parlor	Single Family Residential
16	12	228689	401	W. Charlton Street	M58 061	C	1940-1949	May be Eligible	NA	NA	No Academic Style	Side Gabled Cottage	Single Family Residential
18	12	228708	411	W. Charlton Street	M58 060	C	1920-1929	May be Eligible	BL-M654	1028	Craftsman - Elements	Saddlebag	Single Family Residential
22	12	228709	441	W. Charlton Street	M58 057	C	1910-1919	Eligible	BL-M-655	1029	No Academic Style	Pyramidal Cottage	Single Family Residential
78	12	228728	651	N. Columbia Street	M58 052	C	1910-1919	Eligible	BL-M-657	1031	No Academic Style	Central Hall Cottage	Single Family Residential
79	12	229068	701	N. Columbia Street	M58 051	C	1940-1949	May be Eligible	NA	NA	Neoclassical Elements	Central Hall Cottage	Single Family Residential

**NORTH MILLEDGEVILLE HISTORIC RESOURCES SURVEY**

ECA Resource ID	Block Number	NAHRGIS #	Address	Street	Parcel Number	Contributing / Noncontributing	Construction Date	NR Eligibility Determination	Previous Survey # (If Applicable)	Previous NAHRGIS Resource # (If Applicable)	Style (if historic resource)	Type (if historic resource)	Original Use
80	12	229069	721	N. Columbia Street	M58 050	C	1930-1939	May be Eligible	NA	NA	Folk Victorian elements	Extended Hall-Parlor	Single Family Residential
81	12	229070	757	N. Columbia Street	M58 048	NC	1965-1974	Not Eligible	NA	NA	NA	Store - Single Retail	Commercial
17	12	229071	410	W. Charlton Street	M58 071	C	1950-1959	Not Eligible	NA	NA	No Academic Style	Extended Hall-Parlor	Single Family Residential
41	12	229072	740	N. Clark Street	M58 069	C	1930-1939	May be Eligible	NA	NA	Craftsman - Elements	Bungalow - Front Gabled	Single Family Residential
40	12	229073	736	N. Clark Street	M58 068	C	1930-1939	May be Eligible	NA	NA	Craftsman - Elements	Central Hall Cottage	Single Family Residential
43	13	229088	747	N. Clark Street	M58 111	C	1940-1949	Not Eligible	NA	NA	No Academic Style	Central Hall Cottage	Single Family Residential
262	13	229108	330	W. Walton Street	M58 110	NC	1960-1969	Not Eligible	NA	NA	No Academic Style	Mobile Home	Single Family Residential
260	13	229128	320	W. Walton Street	M58 108	NC	1955-1959	Not Eligible	NA	NA	No Academic Style	Mobile Home	Single Family Residential
258	13	229129	310	W. Walton Street	M58 107	NC	1975	Not Eligible	NA	NA	No Academic Style	Mobile Home	Single Family Residential
190	13	229148	730	N. Liberty Street	M58 106	NC	1960-1969	Not Eligible	NA	NA	No Academic Style	Ranch - Linear	Single Family Residential
122	13	229168	327	W. Hall Street	M58 103	C	1920-1929	May be Eligible	NA	NA	No Academic Style	Bungalow - Hip	Single Family Residential
123	13	229568	333	W. Hall Street	M58 102	C	1910-1919	Not Eligible	NA	NA	Folk Victorian elements	Gabled-Wing Cottage	Single Family Residential
42	13	229569	745	N. Clark Street	M58 112	C	1950-1959	May be Eligible	NA	NA	No Academic Style	Ranch - Minimal	Single Family Residential
309	14	229570	700	N. Wilkinson Street	M58 138	C	1950-1959	May be Eligible	NA	NA	No Academic Style	NA	Warehouse
116	14	229588	241	W. Hall Street	M58 140	C	1950-1959	May be Eligible	NA	NA	No Academic Style	Ranch - Composite	Single Family Residential
118	14	229589	251	W. Hall Street	M58 141	C	1875-1884	Eligible	BL-M-664	1038	No Academic Style	Double Pen	Single Family Residential
189	14	229608	725	N. Liberty Street	M58 142	C	1930-1939	May be Eligible	NA	NA	No Academic Style	Central Hall Cottage	Single Family Residential
281	15	229628	730	N. Wayne Street	M80 018	NC	1960-1969	Not Eligible	NA	NA	No Academic Style	NA	Single Family Residential
164	16	229648	760	N. Jefferson Street	M80 079	C	1890-1909	May be Eligible	NA	NA	Folk Victorian elements	Gabled-Wing House	Single Family Residential
160	16	229668	720	N. Jefferson Street	M80 090	NC	1940-1949	Not Eligible	NA	NA	No Academic Style	Bungalow - Hip	Single Family Residential
86	16	229688	100	E. Hall Street	M80 089	C	1930-1939	Eligible	BL-M-691	1065	NA	Store - Corner Store	Commercial
93	16	229708	150	E. Hall Street	M80 088	C	1890-1899	Eligible	BL-M-690	1064	Craftsman - Elements	Central Hall Cottage	Single Family Residential
91	16	229728	140	E. Hall Street	M80 087	C	1890-1899	Eligible	BL-M-689	1063	No Academic Style	Central Hall Cottage	Single Family Residential
88	16	229748	120	E. Hall Street	M80 086	C	1910-1919	Eligible	BL-M-688	1062	Craftsman - Elements	Georgian Cottage	Single Family Residential
280	16	229768	711	N. Wayne Street	M80 084	NC	1940-1949	Not Eligible	NA	NA	No Academic Style	Ranch - Minimal	Single Family Residential
282	16	229788	731	N. Wayne Street	M80 083	C	1940-1949	Not Eligible	NA	NA	No Academic Style	Extended Hall-Parlor	Single Family Residential
283	16	229808	741	N. Wayne Street	M80 082	C	1880-1889	Eligible	BL-M-687	1061	Queen Anne	New South Cottage	Single Family Residential
163	17	229828	751	N. Jefferson Street	M81 068	C	1920-1929	May be Eligible	NA	NA	No Academic Style	NA	Business/Office
129	17	229848	200	Hitchcock Avenue	M81 069	C	1920-1929	May be Eligible	NA	NA	No Academic Style	Bungalow - Hip	Single Family Residential

**NORTH MILLEDGEVILLE HISTORIC RESOURCES SURVEY**

ECA Resource ID	Block Number	NAHRGIS #	Address	Street	Parcel Number	Contributing / Noncontributing	Construction Date	NR Eligibility Determination	Previous Survey # (If Applicable)	Previous NAHRGIS Resource # (If Applicable)	Style (if historic resource)	Type (if historic resource)	Original Use
161	17	229868	731	N. Jefferson Street	M81 066	C	1940-1949	May be Eligible	NA	NA	No Academic Style	Bungalow - Hip	Single Family Residential
130	17	229888	201	Hitchcock Avenue	M81 065	C	1940-1949	May be Eligible	NA	NA	No Academic Style	Bungalow - Hip	Single Family Residential
136	17	229908	255	Hitchcock Avenue	M81 064	C	1940-1949	May be Eligible	NA	NA	No Academic Style	Bungalow - Hip	Single Family Residential
128	18	229928	352	W. Hall Street	M58 098	C	1910-1919	May be Eligible	NA	NA	No Academic Style	Central Hall Cottage	Single Family Residential
126	18	229948	346	W. Hall Street	M58 097	C	1930-1939	Not Eligible	NA	NA	No Academic Style	Gabled-Wing Cottage	Single Family Residential
125	18	229968	344	W. Hall Street	M58 096	C	1940-1949	Not Eligible	NA	NA	No Academic Style	Bungalow - Front Gabled	Single Family Residential
121	18	229969	326	W. Hall Street	M58 093	C	1940-1949	May be Eligible	NA	NA	No Academic Style	Central Hall Cottage	Single Family Residential
120	18	229988	320	W. Hall Street	M58 092	C	1940-1949	Not Eligible	NA	NA	No Academic Style	Shotgun	Single Family Residential
188	18	229989	650	N. Liberty Street	M58 090	C	1890-1899	Eligible	BL-M-661	1035	Craftsman - Elements	Gabled-Wing Cottage	Single Family Residential
186	18	230008	640	N. Liberty Street	M58 089	C	1930-1939	Eligible	BL-M-662	1036	Craftsman - Elements	Extended Hall-Parlor	Single Family Residential
184	18	230009	632	N. Liberty Street	M58 088	C	1930-1939	May be Eligible	NA	NA	Craftsman - Elements	Gabled-Wing Cottage	Single Family Residential
183	18	230028	630	N. Liberty Street	M58 087	C	1930-1939	May be Eligible	BL-M-663	1037	No Academic Style	Extended Hall-Parlor	Single Family Residential
182	18	230048	620	N. Liberty Street	M58 086	C	1930-1939	May be Eligible	NA	NA	No Academic Style	Central Hall Cottage	Single Family Residential
196	18	230049	609 & 613	N. Liberty Street	M58 099	C	1930-1939	May be Eligible	NA	NA	No Academic Style	Bungalow - Hip	Single Family Residential
109	20	230068	120	W. Hall Street	M81 001	C	1870-1879	Eligible	BL-M-426	798	No Academic Style	Gabled-Wing Cottage	Single Family Residential
275	20	230088	622	N. Wayne Street	M81 004	C	1930-1939	May be Eligible	BL-M-427	799	Craftsman - Elements	NA	Multi-Family Residential
271	20	230108	606	N. Wayne Street	M81 006	C	1900-1909	May be Eligible	BL-M-428	800	No Academic Style	Georgian Cottage	Single Family Residential
269	20	230128	600	N. Wayne Street	M81 007	C	1930-1939	May be Eligible	BL-M-429	801	No Academic Style	Saddlebag	Multi-Family Residential
187	19	230148	645	N. Liberty Street	M58 143	C	1910-1919	May be Eligible	BL-M-666	1040	Craftsman - Elements	Saddlebag	Single Family Residential
117	19	230168	250	W. Hall Street	M58 143	C	1950-1959	Eligible	NA	NA	No Academic Style	Ranch	Single Family Residential
115	19	230188	240	W. Hall Street	M58 153	C	1910-1919	Eligible	BL-M-667	1041	Craftsman - Elements	Gabled-Wing Cottage	Single Family Residential
114	19	230208	230	W. Hall Street	M58 152	C	1940-1949	May be Eligible	NA	NA	No Academic Style	Central Hall Cottage	Single Family Residential
113	19	230228	220	W. Hall Street	M58 154	C	1930-1939	Eligible	NA	NA	English Vernacular Revival	English Cottage	Single Family Residential
112	19	230248	210	W. Hall Street	M58 167	C	1885-1894	Eligible	BL-M-672	1046	No Academic Style	Shotgun	Single Family Residential
232	19	230268	605	Simmons Avenue	M58 159	C	1930-1939	May be Eligible	NA	NA	No Academic Style	Shotgun	Single Family Residential
234	19	230269	613	Simmons Avenue	M58 158	C	1930-1939	Not Eligible	NA	NA	No Academic Style	gab1	Single Family Residential
235	19	230288	623	Simmons Avenue	M58 157	C	1920-1929	Not Eligible	BL-M-669	1043	No Academic Style	Saddlebag	Single Family Residential
236	19	230289	631	Simmons Avenue	M58 156	C	1910-1919	May be Eligible	BL-M-670	1044	No Academic Style	Central Hall Cottage	Single Family Residential
237	19	230308	641	Simmons Avenue	M58 155	C	1920-1929	Eligible	BL-M-671	1045	No Academic Style	Saddlebag	Single Family Residential

NORTH MILLEDGEVILLE HISTORIC RESOURCES SURVEY

ECA Resource ID	Block Number	NAHRGIS #	Address	Street	Parcel Number	Contributing / Noncontributing	Construction Date	NR Eligibility Determination	Previous Survey # (If Applicable)	Previous NAHRGIS Resource # (If Applicable)	Style (if historic resource)	Type (if historic resource)	Original Use
233	19	230309	610	Simmons Avenue	M58 147	C	1920-1929	May be Eligible	BL-M-668	1042	No Academic Style	Shotgun	Single Family Residential
185	19	230328	635	N. Liberty Street	M58 144	C	1930-1939	Not Eligible	NA	NA	Craftsman - Elements	Central Hall Cottage	Single Family Residential
89	21	230348	121	E. Hall Street	M81 012	C	1920-1929	Eligible	BL-M-436	808	Craftsman - Elements	Extended Hall-Parlor	Single Family Residential
277	21	230368	641	N. Wayne Street	M81 027	NC	1920-1929	Not Eligible	NA	NA	No Academic Style	Saddlebag	Single Family Residential
90	21	230388	131	E. Hall Street	M81 013	C	1920-1929	Eligible	BL-M-437	809	No Academic Style	Extended Hall-Parlor	Single Family Residential
92	21	230389	141	E. Hall Street	M81 014	C	1910-1919	Eligible	BL-M-438	810	Craftsman - Elements	Bungalow - Hip	Single Family Residential
151	21	230408	600	N. Jefferson Street	M81 015	C	1930-1939	May be Eligible	NA	NA	Craftsman - Elements	Bungalow - Hip	Single Family Residential
2	21	230428	120	E. Charlton Street	M81 021	C	1920-1929	May be Eligible	NA	NA	No Academic Style	Saddlebag	Single Family Residential
1	21	230432	110	E. Charlton Street	M81 022	C	1955-1959	May be Eligible	NA	NA	No Academic Style	Ranch - Linear	Single Family Residential
270	21	230434	601	N. Wayne Street	M81 023	C	1870-1879	Eligible	BL-M-435	807	Queen Anne	I House	Single Family Residential
276	21	230449	631	N. Wayne Street	M81 026	C	1940-1949	May be Eligible	NA	NA	No Academic Style	Ranch - Minimal	Single Family Residential
158	22	230468	651	N. Jefferson Street	M81 054	C	1900-1909	Eligible	BL-M-446	818	No Academic Style	Central Hall Cottage	Single Family Residential
12	22	230489	260	W. Charlton Street	M81 045	C	1930-1939	Eligible	BL-M-439	811	No Academic Style	Extended Hall-Parlor	Single Family Residential
11	22	230508	250	W. Charlton Street	M81 045	C	1930-1939	Not Eligible	BL-M-440	812	No Academic Style	Georgian Cottage	Single Family Residential
10	22	230510	240	W. Charlton Street	M81 046	C	1955-1959	Not Eligible	NA	NA	No Academic Style	Extended Hall-Parlor	Single Family Residential
9	22	230548	230	W. Charlton Street	M81 047	C	1920-1929	Eligible	BL-M-441	813	No Academic Style	Double Pen	Single Family Residential
8	22	230569	220	W. Charlton Street	M81 048	C	1890-1899	May be Eligible	BL-M-442	814	No Academic Style	Georgian Cottage	Single Family Residential
153	22	230570	611	N. Jefferson Street	M81 050	C	1890-1899	Eligible	BL-M-443	815	Craftsman - Elements	Georgian Cottage	Single Family Residential
155	22	230572	621	N. Jefferson Street	M81 051	C	1940-1949	Not Eligible	NA	NA	No Academic Style	Central Hall Cottage	Single Family Residential
156	22	230574	631	N. Jefferson Street	M81 052	C	1880-1889	Eligible	BL-M-444	816	Folk Victorian elements	Gabled-Wing Cottage	Single Family Residential
157	22	230588	641	N. Jefferson Street	M81 053	C	1910-1919	Not Eligible	BL-M-445	817	No Academic Style	other	Single Family Residential
3	21	NA	130	E. Charlton Street	M81 020	NC	1970-1979	Not Eligible	NA	NA	NA	NA	Gas Station/Garage
5	20	NA	131	W. Charlton Street	M81 009	NC	2006	Not Eligible	NA	NA	NA	NA	Single Family Residential
6	25	NA	200	W. Charlton Street	M59 112	NC	1970-1979	Not Eligible	NA	NA	NA	NA	Commercial
7	25	NA	210	W. Charlton Street	M59 111	NC	1993	Not Eligible	NA	NA	NA	NA	Single Family Residential
13	24	NA	320	W. Charlton Street	M59 081	NC	1950-1959	Not Eligible	NA	NA	NA	NA	Single Family Residential
15	23	NA	400	W. Charlton Street	M58 080	NC	1970	Not Eligible	NA	NA	NA	NA	Single Family Residential
29	24	NA	501	N. Clark Street	M59 073	NC	1970-1979	Not Eligible	NA	NA	NA	NA	Single Family Residential
39	12	NA	730	N. Clark Street	M58 067	NC	1965-1974	Not Eligible	NA	NA	NA	NA	Single Family Residential

**NORTH MILLEDGEVILLE HISTORIC RESOURCES SURVEY**

ECA Resource ID	Block Number	NAHRGIS #	Address	Street	Parcel Number	Contributing / Noncontributing	Construction Date	NR Eligibility Determination	Previous Survey # (If Applicable)	Previous NAHRGIS Resource # (If Applicable)	Style (if historic resource)	Type (if historic resource)	Original Use
44	12	NA	750	N. Clark Street	M58 070	NC	1990	Not Eligible	NA	NA	NA	NA	Single Family Residential
45	7	NA	800	N. Clark Street	M58 116	C	1950-1959	Not Eligible	NA	NA	No Academic Style	Ranch - Minimal	Single Family Residential
46	7	NA	809	N. Clark Street	M58 117	C	1940-1949	May be Eligible	Na	NA	No Academic Style	Hall-Parlor	Single Family Residential
47	1	NA	810	N. Clark Street	M57 118	C	1940-1949	Not Eligible	NA	NA	Craftsman - Elements	Bungalow - Front Gabled	Single Family Residential
48	1	NA	820	N. Clark Street	M57 117	C	1940-1949	May be Eligible	NA	NA	Craftsman - Elements	Bungalow - Hip	Single Family Residential
49	7	NA	821	N. Clark Street	M58 119	C	1940-1949	May be Eligible	BL-M-651	1025	Craftsman - Elements	Extended Hall-Parlor	Single Family Residential
50	7	NA	831	N. Clark Street	M58 120	C	1940-1949	Eligible	BL-M-650	1024	Craftsman - Elements	Extended Hall-Parlor	Single Family Residential
51	1	NA	836	N. Clark Street	M57 116	C	1940-1949	May be Eligible	NA	NA	No Academic Style	Bungalow - Side Gabled	Single Family Residential
52	1	NA	838	N. Clark Street	M57 115	C	1940-1949	Not Eligible	NA	NA	No Academic Style	Extended Hall-Parlor	Single Family Residential
53	1	NA	840	N. Clark Street	M57 114	C	1940-1949	Eligible	BL-M-756	1130	Craftsman - Elements	Bungalow - Hip	Single Family Residential
54	7	NA	841	N. Clark Street	M58 121	C	1940-1949	May be Eligible	NA	NA	No Academic Style	Hall-Parlor	Single Family Residential
55	7	NA	847	N. Clark Street	M58 122	C	1940-1949	May be Eligible	NA	NA	No Academic Style	Extended Hall-Parlor	Single Family Residential
56	1	NA	850	N. Clark Street	M57 113	NC	2008	Not Eligible	NA	NA	NA	NA	Single Family Residential
57	1	NA	902	N. Clark Street	M57 102	NC	1965-1974	Not Eligible	NA	NA	NA	NA	Single Family Residential
58	2	NA	905	N. Clark Street	M57 124	C	1940-1949	May be Eligible	NA	NA	NA	Church-Front Gabled	Church
59	1	NA	908	N. Clark Street	M57 101	C	1940-1949	Not Eligible	NA	NA	Craftsman - Elements	Hall-Parlor	Single Family Residential
60	2	NA	915	N. Clark Street	M57 125	C	1940-1949	May be Eligible	NA	NA	No Academic Style	Extended Hall-Parlor	Single Family Residential
61	1	NA	916	N. Clark Street	M57 100	C	1940-1949	May be Eligible	NA	NA	No Academic Style	Central Hall Cottage	Single Family Residential
62	1	NA	922	N. Clark Street	M57 099	C	1940-1949	May be Eligible	NA	NA	No Academic Style	Bungalow - Hip	Single Family Residential
63	1	NA	930	N. Clark Street	M57 098	C	1940-1949	May be Eligible	NA	NA	No Academic Style	Bungalow - Hip	Single Family Residential
64	1	NA	936	N. Clark Street	M57 097	C	1940-1949	May be Eligible	NA	NA	No Academic Style	Extended Hall-Parlor	Single Family Residential
65	1	NA	936 1/2	N. Clark Street	M57 104	C	1940-1949	Not Eligible	BL-M-755	1129	No Academic Style	Bungalow - Front Gabled	Single Family Residential
66	1	NA	940	N. Clark Street	M57 096	C	1940-1949	May be Eligible	NA	NA	No Academic Style	Ranch - Minimal	Single Family Residential
67	2	NA	941	N. Clark Street	M57 131	C	1940-1949	May be Eligible	NA	NA	NA	NA	Cemetery - Funerary
68	1	NA	946	N. Clark Street	M57 095	NC	1940-1949	Not Eligible	NA	NA	No Academic Style	Bungalow - Hip	Single Family Residential
69	1	NA	950	N. Clark Street	M57 094	NC	1965-1974	Not Eligible	NA	NA	NA	NA	Cemetery - Funerary
75	23	NA	435	N. Columbia Street	M59 058	NC	1965-1974	Not Eligible	NA	NA	NA	NA	Single Family Residential
76	23	NA	451	N. Columbia Street	M58 073	NC	2008	Not Eligible	NA	NA	NA	NA	Single Family Residential
77	12	NA	631	N. Columbia Street	M58 054	NC	1985	Not Eligible	NA	NA	NA	NA	Single Family Residential

**NORTH MILLEDGEVILLE HISTORIC RESOURCES SURVEY**

ECA Resource ID	Block Number	NAHRGIS #	Address	Street	Parcel Number	Contributing / Noncontributing	Construction Date	NR Eligibility Determination	Previous Survey # (If Applicable)	Previous NAHRGIS Resource # (If Applicable)	Style (if historic resource)	Type (if historic resource)	Original Use
82	1	NA	943	N. Columbia Street	M57 108	NC	1965-1974	Not Eligible	NA	NA	NA	NA	Single Family Residential
83	1	NA	961	N. Columbia Street	M57 090	C	1940-1949	May be Eligible	NA	NA	NA	Ranch - Composite	Business/Office
84	6	NA	930	N. Elbert Street	M80 125	NC	1950-1959	Not Eligible	NA	NA	No Academic Style	NA	Warehouse
85	6	NA	950	N. Elbert Street	M80 124	NC	1980-1989	Not Eligible	NA	NA	NA	NA	Single Family Residential
87	21	NA	111	E. Hall Street	M81 011	NC	1996	Not Eligible	NA	NA	NA	NA	Single Family Residential
94	8	NA	230	Fraleley Avenue	M80 008	NC	1963	Not Eligible	NA	NA	NA	NA	Single Family Residential
95	8	NA	801	Fraleley Avenue	M80 004A	NC	2003	Not Eligible	NA	NA	NA	NA	Storage
96	8	NA	810	Fraleley Avenue	M80 003	NC	1965-1974	Not Eligible	NA	NA	NA	NA	Single Family Residential
97	8	NA	811	Fraleley Avenue	M80 005	NC	1965-1974	Not Eligible	NA	NA	NA	NA	Single Family Residential
98	8	NA	820	Fraleley Avenue	M80 002	C	1950-1955	Not Eligible	NA	NA	No Academic Style	Extended Hall-Parlor	Single Family Residential
99	8	NA	821	Fraleley Avenue	M80 006	NC	1990	Not Eligible	NA	NA	NA	NA	Single Family Residential
100	8	NA	840	Fraleley Avenue	M80 001	NC	1965-1974	Not Eligible	NA	NA	NA	NA	Single Family Residential
101	3	NA	910	Fraleley Avenue	M79 067	NC	1970-1979	Not Eligible	NA	NA	NA	NA	Single Family Residential
102	3	NA	920	Fraleley Avenue	M79 066	NC	1965-1974	Not Eligible	NA	NA	NA	NA	Single Family Residential
103	3	NA	931	Fraleley Avenue	M79 083	C	1940-1949	Eligible	NA	NA	No Academic Style	Side Gabled Cottage	Single Family Residential
104	3	NA	940	Fraleley Avenue	M79 065	C	1950-1959	Not Eligible	NA	NA	No Academic Style	Two Story - American Four Square	Single Family Residential
105	3	NA	941	Fraleley Avenue	M79 81	C	1940-1949	Eligible	NA	NA	No Academic Style	Side Gabled Cottage	Single Family Residential
106	3	NA	950	Fraleley Avenue	M79 064	C	1940-1949	Not Eligible	NA	NA	No Academic Style	Double Shotgun	Single Family Residential
107	3	NA	951	Fraleley Avenue	M79 081	NC	1940-1949	Not Eligible	NA	NA	No Academic Style	Double Shotgun	Single Family Residential
108	25	NA	100	Habersham Street	M59 106	NC	1990-1999	Not Eligible	NA	NA	NA	NA	Single Family Residential
110	20	NA	130	W. Hall Street	M81 120	NC	1970-1979	Not Eligible	NA	NA	NA	NA	Single Family Residential
111	20	NA	150	W. Hall Street	M81 121	NC	1970-1979	Not Eligible	NA	NA	NA	NA	Single Family Residential
119	13	NA	311	W. Hall Street	M58 104	NC	1972	Not Eligible	NA	NA	NA	NA	Single Family Residential
124	13	NA	339	W. Hall Street	M58 101	NC	1975	Not Eligible	NA	NA	NA	NA	Single Family Residential
127	13	NA	351	W. Hall Street	M58 100	NC	1984	Not Eligible	NA	NA	NA	NA	Single Family Residential
131	17	NA	211	Hitchcock Avenue	M81 061	NC	2000	Not Eligible	NA	NA	NA	NA	Single Family Residential
132	17	NA	221	Hitchcock Avenue	M81 063	NC	c. 2000	Not Eligible	NA	NA	NA	NA	Single Family Residential
133	17	NA	230	Hitchcock Avenue	M81 060	NC	c. 2000	Not Eligible	NA	NA	NA	NA	Single Family Residential

**NORTH MILLEDGEVILLE HISTORIC RESOURCES SURVEY**

ECA Resource ID	Block Number	NAHRGIS #	Address	Street	Parcel Number	Contributing / Noncontributing	Construction Date	NR Eligibility Determination	Previous Survey # (If Applicable)	Previous NAHRGIS Resource # (If Applicable)	Style (if historic resource)	Type (if historic resource)	Original Use
134	17	NA	231	Hitchcock Avenue	M81 062	NC	c. 2000	Not Eligible	NA	NA	NA	NA	Single Family Residential
135	17	NA	240	Hitchcock Avenue	M81 059	NC	c. 2000	Not Eligible	NA	NA	NA	NA	Single Family Residential
138	28	NA	411	N. Jefferson Street	M82 002	NC	2008	Not Eligible	NA	NA	NA	NA	Medical Office
139	28	NA	421	N. Jefferson Street	M82 001	NC	1985	Not Eligible	NA	NA	NA	NA	Medical Office
141	27	NA	500	N. Jefferson Street	M81 037	NC	1970-1979	Not Eligible	NA	NA	NA	NA	Commercial
142	27	NA	510	N. Jefferson Street	M81 036	NC	1950-1959	Not Eligible	NA	NA	No Academic Style	Minimal Cottage	Single Family Residential
148	28	NA	531	N. Jefferson Street	M81 042	NC	1996	Not Eligible	NA	NA	NA	NA	Warehouse
152	22	NA	601	N. Jefferson Street	M81 049	NC	1995	Not Eligible	NA	NA	NA	NA	Commercial
154	21	NA	620	N. Jefferson Street	M81 019	NC	1985	Not Eligible	NA	NA	NA	NA	Single Family Residential
159	17	NA	701	N. Jefferson Street	M81 067	NC	1988	Not Eligible	NA	NA	NA	NA	Single Family Residential
162	16	NA	740	N. Jefferson Street	M80 091	NC	2005	Not Eligible	NA	NA	NA	NA	Commercial
165	10	NA	800	N. Jefferson Street	M80 077	NC	1970-1990	Not Eligible	NA	NA	NA	NA	Commercial
166	5	NA	900	N. Jefferson Street	M80 075	NC	1995	Not Eligible	NA	NA	NA	NA	Commercial
167	6	NA	901	N. Jefferson Street	M80 116	NC	1980-1989	Not Eligible	NA	NA	NA	NA	Commercial
168	5	NA	910	N. Jefferson Street	M80 073	C	1900-1909	Eligible	BL-M-693	1067	Craftsman - Elements	Georgian Cottage	Single Family Residential
169	6	NA	911	N. Jefferson Street	M80 117	C	1955-1959	May be Eligible	NA	NA	No Academic Style	Ranch - Linear	Single Family Residential
170	6	NA	913	N. Jefferson Street	M80 118	NC	1970-1975	Not Eligible	NA	NA	NA	NA	Single Family Residential
171	5	NA	920	N. Jefferson Street	M80 072	C	1900-1909	Not Eligible	NA	NA	No Academic Style	Gabled-Wing Cottage	Single Family Residential
172	6	NA	921	N. Jefferson Street	M80 119	C	1940-1949	May be Eligible	NA	NA	No Academic Style	Side Gabled Cottage	Single Family Residential
173	6	NA	931	N. Jefferson Street	M80 120	NC	1970-1979	Not Eligible	NA	NA	NA	NA	Business/Office
174	5	NA	998	N. Jefferson Street	M80 070	NC	1960-1969	Not Eligible	NA	NA	NA	NA	Commercial
175	24	NA	430	N. Liberty Street	M59 087	NC	1970-1979	Not Eligible	NA	NA	NA	NA	Single Family Residential
177	25	NA	509	N. Liberty Street	M59 107	NC	1965-1974	Not Eligible	NA	NA	NA	NA	Church
179	24	NA	520	N. Liberty Street	M59 083	NC	1970-1979	Not Eligible	NA	NA	NA	NA	Single Family Residential
191	7	NA	810	N. Liberty Street	M58 131	C	1930-1939	May be Eligible	NA	NA	Craftsman - Elements	Bungalow - Front Gabled	Single Family Residential
192	7	NA	820	N. Liberty Street	M58 130	NC	1950-1959	Not Eligible	NA	NA	Craftsman - Elements	Side Gabled Cottage	Single Family Residential
193	7	NA	830	N. Liberty Street	M58 129	NC	1980-1989	Not Eligible	NA	NA	NA	NA	Single Family Residential
197	4	NA	110	W. Martin Luther King Jr. Drive	M80 051	NC	1970-1979	Not Eligible	NA	NA	NA	NA	Commercial

**NORTH MILLEDGEVILLE HISTORIC RESOURCES SURVEY**

ECA Resource ID	Block Number	NAHRGIS #	Address	Street	Parcel Number	Contributing / Noncontributing	Construction Date	NR Eligibility Determination	Previous Survey # (If Applicable)	Previous NAHRGIS Resource # (If Applicable)	Style (if historic resource)	Type (if historic resource)	Original Use
198	4	NA	120	W. Martin Luther King Jr. Drive	M80 050	C	1920-1929	May be Eligible	BL-M-684	1058	No Academic Style	Shotgun	Single Family Residential
199	4	NA	150	W. Martin Luther King Jr. Drive	M80 048	NC	1955-1959	May be Eligible	NA	NA	No Academic Style	Ranch - Composite	Single Family Residential
200	3	NA	228	W. Martin Luther King Jr. Drive	M79 079	C	1940-1949	May be Eligible	NA	NA	No Academic Style	Extended Hall-Parlor	Single Family Residential
201	3	NA	230	W. Martin Luther King Jr. Drive	M79 080	NC	1965-1974	Not Eligible	NA	NA	NA	NA	Commercial
202	3	NA	240	W. Martin Luther King Jr. Drive	M79 063	C	1940-1949	May be Eligible	NA	NA	Craftsman - Elements	Central Hall Cottage	Single Family Residential
203	1	NA	430	W. Martin Luther King Jr. Drive	M57 092	C	1956	Not Eligible	NA	NA	No Academic Style	Community Store	American Legion
204	1	NA	450	W. Martin Luther King Jr. Drive	M57 091	C	1950-1959	May be Eligible	NA	NA	No Academic Style	Ranch - Minimal	Single Family Residential
205	5	NA	115	E. Martin Luther King Jr.	M80 069	C	1900-1909	Eligible	BL-M-692	1066	Neoclassical Elements	Georgian Cottage	Single Family Residential
206	5	NA	117	E. Martin Luther King Jr.	M80 068	NC	1950-1959	Not Eligible	NA	NA	No Academic Style	NA	Warehouse
207	6	NA	211	E. Martin Luther King Jr.	M80 121	C	1900-1909	Eligible	NA	NA	No Academic Style	Georgian Cottage	Single Family Residential
208	6	NA	221	E. Martin Luther King Jr.	M80 122	NC	1970-1979	Not Eligible	NA	NA	NA	NA	Single Family Residential
209	6	NA	231	E. Martin Luther King Jr.	M80 123	C	1920-1929	May be Eligible	NA	NA	No Academic Style	Georgian Cottage	Single Family Residential
210	9	NA	110	W. Mitchell Street	M80 030	C	1920-1929	Eligible	BL-M-679	1053	No Academic Style	Extended Hall-Parlor	Single Family Residential
211	9	NA	120	W. Mitchell Street	M80 029	C	1930-1939	May be Eligible	NA	NA	Craftsman - Elements	Extended Hall-Parlor	Single Family Residential
212	4	NA	131	W. Mitchell Street	M80 056	C	1940-1949	May be Eligible	NA	NA	No Academic Style	Central Hall Cottage	Single Family Residential
213	6	NA	131	W. Mitchell Street	M80 115	NC	1950-1959	Not Eligible	NA	NA	No Academic Style	NA	Storage
214	9	NA	140	W. Mitchell Street	M80 028	C	1940-1949	Not Eligible	NA	NA	No Academic Style	Bungalow - Front Gabled	Single Family Residential
215	4	NA	141	W. Mitchell Street	M80 057	C	1950-1959	May be Eligible	NA	NA	No Academic Style	Minimal Cottage	Single Family Residential
216	9	NA	150	W. Mitchell Street	M80 027	C	1940-1949	May be Eligible	NA	NA	No Academic Style	Shotgun	Single Family Residential
217	4	NA	151	W. Mitchell Street	M80 058	C	1950-1959	May be Eligible	NA	NA	No Academic Style	Hall-Parlor	Single Family Residential
218	4	NA	161	W. Mitchell Street	M80 043	C	1930-1939	May be Eligible	NA	NA	No Academic Style	Gabled-Wing Cottage	Single Family Residential
219	3	NA	201	W. Mitchell Street	M79 071	C	1940-1949	May be Eligible	NA	NA	No Academic Style	NA	Multi-Family Residential
220	3	NA	231	W. Mitchell Street	M79 069	C	1920-1929	May be Eligible	NA	NA	Neoclassical Elements	Central Hall Cottage	Single Family Residential



**NORTH MILLEDGEVILLE HISTORIC RESOURCES SURVEY**

ECA Resource ID	Block Number	NAHRGIS #	Address	Street	Parcel Number	Contributing / Noncontributing	Construction Date	NR Eligibility Determination	Previous Survey # (If Applicable)	Previous NAHRGIS Resource # (If Applicable)	Style (if historic resource)	Type (if historic resource)	Original Use
221	3	NA	241	W. Mitchell Street	M79 070	NC	1950-1959	Not Eligible	NA	NA	No Academic Style	NA	Gas Station/Garage
222	3	NA	251	W. Mitchell Street	M79 068	NC	1965-1974	Not Eligible	NA	NA	NA	NA	Single Family Residential
223	2	NA	311	W. Mitchell Street	M57 129	C	1940-1949	Not Eligible	NA	NA	No Academic Style	Extended Hall-Parlor	Single Family Residential
224	2	NA	317	W. Mitchell Street	M57 130	C	1940-1949	May be Eligible	NA	NA	No Academic Style	Extended Hall-Parlor	Single Family Residential
225	7	NA	320	W. Mitchell Street	M58 126	C	1940-1949	May be Eligible	NA	NA	No Academic Style	Extended Hall-Parlor	Single Family Residential
226	2	NA	325	W. Mitchell Street	M57 128	NC	1950-1959	Not Eligible	NA	NA	No Academic Style	Extended Hall-Parlor	Single Family Residential
227	7	NA	326	W. Mitchell Street	M58 125	C	1940-1949	May be Eligible	NA	NA	No Academic Style	Other	Single Family Residential
228	7	NA	330	W. Mitchell Street	M58 124	C	1940-1949	May be Eligible	NA	NA	Craftsman - Elements	Extended Hall-Parlor	Single Family Residential
229	2	NA	331	W. Mitchell Street	M57 127	NC	1940-1949	Not Eligible	NA	NA	No Academic Style	Extended Hall-Parlor	Single Family Residential
230	7	NA	340	W. Mitchell Street	M58 123	C	1940-1949	May be Eligible	NA	NA	No Academic Style	Side Gabled Cottage	Single Family Residential
231	5	NA	121	E. Mitchell Street	M80 076	C	1930-1939	May be Eligible	NA	NA	No Academic Style	Saddlebag	Single Family Residential
238	25	NA	202	W. Thomas Street	M59 106A	NC	1990-1999	Not Eligible	NA	NA	NA	NA	Single Family Residential
239	24	NA	301	W. Thomas Street	M59 088	NC	1996	Not Eligible	NA	NA	NA	NA	Single Family Residential
245	23	NA	441	W. Thomas Street	M59 068	NC	1965-1974	Not Eligible	NA	NA	NA	NA	Single Family Residential
248	28	NA	240	E. Thomas Street	M81 043	NC	2000	Not Eligible	NA	NA	NA	NA	Single Family Residential
249	9	NA	121	W. Walton Street	M80 036	C	1930-1939	Eligible	BL-M-680	1054	Craftsman - Elements	Saddlebag	Single Family Residential
250	9	NA	141	W. Walton Street	M80 038	C	1930-1939	Not Eligible	NA	NA	No Academic Style	Gabled-Wing Cottage	Single Family Residential
251	9	NA	151	W. Walton Street	M80 039	C	1920-1929	Eligible	BL-M-683	1057	Craftsman - Elements	Bungalow - Front Gabled	Single Family Residential
252	9	NA	151	W. Walton Street	M80 039	C	1930-1939	May be Eligible	BL-M-682	1056	No Academic Style	Double Shotgun	Single Family Residential
253	9	NA	161	W. Walton Street	M80 041	C	1940-1949	May be Eligible	NA	NA	No Academic Style	Gabled-Wing Cottage	Single Family Residential
254	9	NA	181	W. Walton Street	M80 040	C	1910-1919	Not Eligible	NA	NA	Craftsman - Elements	Extended Hall-Parlor	Single Family Residential
255	8	NA	235	W. Walton Street	M80 004	C	1940-1949	May be Eligible	NA	NA	No Academic Style	Side Gabled Cottage	Single Family Residential
256	7	NA	301	W. Walton Street	M58 132	C	1960-1969	Not Eligible	NA	NA	NA	NA	Social Lodge
257	7	NA	307	W. Walton Street	M58 133	NC	2003	Not Eligible	NA	NA	NA	NA	Single Family Residential
259	7	NA	315	W. Walton Street	M58 134	C	1940-1949	May be Eligible	NA	NA	Craftsman - Elements	Extended Hall-Parlor	Single Family Residential
261	7	NA	321	W. Walton Street	M58 135	C	1940-1949	May be Eligible	NA	NA	No Academic Style	Extended Hall-Parlor	Single Family Residential
263	7	NA	331	W. Walton Street	M58 136	C	1940-1949	May be Eligible	NA	NA	No Academic Style	Bungalow - Hip	Single Family Residential
265	26	NA	410	N. Wayne Street	M59 133	NC	1961-1969	Not Eligible	NA	NA	NA	NA	Single Family Residential
267	26	NA	510	N. Wayne Street	M59 126	NC	2004	Not Eligible	NA	NA	NA	NA	Single Family Residential

**NORTH MILLEDGEVILLE HISTORIC RESOURCES SURVEY**

ECA Resource ID	Block Number	NAHRGIS #	Address	Street	Parcel Number	Contributing / Noncontributing	Construction Date	NR Eligibility Determination	Previous Survey # (if Applicable)	Previous NAHRGIS Resource # (if Applicable)	Style (if historic resource)	Type (if historic resource)	Original Use
268	27	NA	531	N. Wayne Street	M81 028	NC	1970-1979	Not Eligible	NA	NA	NA	NA	Warehouse
272	21	NA	611	N. Wayne Street	M81 024	NC	1980	Not Eligible	NA	NA	NA	NA	Commercial
273	20	NA	614	N. Wayne Street	M81 005	NC	2003	Not Eligible	NA	NA	NA	NA	Business/Office
274	21	NA	621	N. Wayne Street	M81 025	NC	1994	Not Eligible	NA	NA	NA	NA	Single Family Residential
278	20	NA	650	N. Wayne Street	M81 002	NC	2005	Not Eligible	NA	NA	NA	NA	Business/Office
279	16	NA	701	N. Wayne Street	M80 085	NC	1994	Not Eligible	NA	NA	NA	NA	Commercial
284	9	NA	800	N. Wayne Street	M80 035	C	1940-1949	May be Eligible	NA	NA	No Academic Style	Other	Single Family Residential
285	9	NA	820	N. Wayne Street	M80 033	NC	1991	Not Eligible	NA	NA	NA	NA	Commercial
286	9	NA	860	N. Wayne Street	M80 031	C	1930-1939	Not Eligible	NA	NA	No Academic Style	Saddlebag	Single Family Residential
287	5	NA	901	N. Wayne Street	M80 059	C	1890-1899	Eligible	BL-M-694	1068	Craftsman - Elements	Gabled-Wing Cottage	Single Family Residential
288	4	NA	910	N. Wayne Street	M80 055	NC	1940-1949	Not Eligible	NA	NA	No Academic Style	Shotgun	Single Family Residential
289	5	NA	911	N. Wayne Street	M80 060	C	1890-1899	Eligible	BL-M-695	1069	Folk Victorian elements	Gabled-Wing Cottage	Single Family Residential
290	4	NA	920	N. Wayne Street	M80 054	C	1880-1889	Not Eligible	BL-M-686	1060	No Academic Style	Saddlebag	Single Family Residential
291	5	NA	921	N. Wayne Street	M80 062	C	1885-1894	Eligible	BL-M-696	1070	No Academic Style	Shotgun	Single Family Residential
292	5	NA	931	N. Wayne Street	M80 063	C	1920-1929	Eligible	BL-M-697	1071	Craftsman - Elements	Bungalow - Hip	Single Family Residential
293	5	NA	941	N. Wayne Street	M80 064	C	1920-1929	Not Eligible	NA	NA	No Academic Style	Side Gabled Cottage	Single Family Residential
294	5	NA	961	N. Wayne Street	M80 065	C	1880-1889	Eligible	BL-M-698	1072	Craftsman - Elements	Central Hall Cottage	Single Family Residential
295	4	NA	970	N. Wayne Street	M80 052	C	1920-1929	Eligible	BL-M-685	1059	No Academic Style	Pyramidal Cottage	Single Family Residential
296	5	NA	971	N. Wayne Street	M80 066	C	1940-1949	May be Eligible	BL-M-699	1073	Craftsman - Elements	Bungalow - Front Gabled	Single Family Residential
297	5	NA	981	N. Wayne Street	M80 067	NC	1965-1974	Not Eligible	NA	NA	NA	NA	Single Family Residential
298	26	NA	401	N. Wilkinson Street	M59 130	NC	1986	Not Eligible	NA	NA	NA	NA	Single Family Residential
301	26	NA	419	N. Wilkinson Street	M59 127	NC	1980	Not Eligible	NA	NA	NA	NA	Commercial
302	25	NA	500	N. Wilkinson Street	M59 119	NC	1993	Not Eligible	NA	NA	NA	NA	Single Family Residential
303	26	NA	501	N. Wilkinson Street	M59 126A	NC	1988	Not Eligible	NA	NA	NA	NA	Single Family Residential
305	25	NA	522	N. Wilkinson Street	M59 116	NC	1991	Not Eligible	NA	NA	NA	NA	Single Family Residential
306	25	NA	530	N. Wilkinson Street	M59 114	NC	1992	Not Eligible	NA	NA	NA	NA	Single Family Residential
307	20	NA	611	N. Wilkinson Street	M59 123	NC	1965-1974	Not Eligible	NA	NA	NA	NA	Single Family Residential
308	20	NA	621	N. Wilkinson Street	M59 122	NC	2006	Not Eligible	NA	NA	NA	NA	Single Family Residential
310	9	NA	801	N. Wilkinson Street	M80 020	NC	1965-1974	Not Eligible	NA	NA	NA	NA	Single Family Residential

**NORTH MILLEDGEVILLE HISTORIC RESOURCES SURVEY**

<b>ECA Resource ID</b>	<b>Block Number</b>	<b>NAHRGIS #</b>	<b>Address</b>	<b>Street</b>	<b>Parcel Number</b>	<b>Contributing / Noncontributing</b>	<b>Construction Date</b>	<b>NR Eligibility Determination</b>	<b>Previous Survey # (If Applicable)</b>	<b>Previous NAHRGIS Resource # (If Applicable)</b>	<b>Style (if historic resource)</b>	<b>Type (if historic resource)</b>	<b>Original Use</b>
311	8	NA	808	N. Wilkinson Street	M80 015	NC	1970-1979	Not Eligible	NA	NA	NA	NA	Single Family Residential
312	9	NA	811	N. Wilkinson Street	M80 021	NC	1970-1979	Not Eligible	NA	NA	NA	NA	Single Family Residential
313	8	NA	816	N. Wilkinson Street	M80 014	C	1930-1939	May be Eligible	BL-M-673	1047	Craftsman - Elements	Central Hall Cottage	Single Family Residential
314	9	NA	823	N. Wilkinson Street	M80 023	NC	1970-1979	Not Eligible	NA	NA	NA	NA	Single Family Residential
315	8	NA	824	N. Wilkinson Street	M80 013	C	1920-1929	Eligible	BL-M-674	1048	Craftsman - Elements	Saddlebag	Single Family Residential
316	8	NA	834	N. Wilkinson Street	M80 012	C	1930-1939	Eligible	NA	NA	No Academic Style	Hall-Parlor	Single Family Residential
317	8	NA	840	N. Wilkinson Street	M80 011	C	1910-1919	Eligible	BL-M-675	1049	Craftsman - Elements	Bungalow - Front Gabled	Single Family Residential
318	8	NA	846	N. Wilkinson Street	M80 010	C	1950-1959	May be Eligible	NA	NA	No Academic Style	Ranch - Minimal	Single Family Residential
319	9	NA	849	N. Wilkinson Street	M80 026	C	1880-1889	May be Eligible	BL-M-677	1051	Folk Victorian elements	Gabled-Wing House	Single Family Residential
320	9	NA	851	N. Wilkinson Street	M80 026	C	1880-1889	Eligible	NA	NA	Queen Anne and Folk Victorian	I House	Single Family Residential
321	8	NA	852	N. Wilkinson Street	M80 009	C	1940-1949	Eligible	BL-M-676	1050	Craftsman - Elements	Bungalow - Front Gabled	Single Family Residential
322	4	NA	917	N. Wilkinson Street	M80 044	NC	2002	Not Eligible	NA	NA	NA	NA	Commercial
323	3	NA	926	N. Wilkinson Street	M79 073	NC	1965-1974	Not Eligible	NA	NA	NA	NA	Single Family Residential
324	3	NA	930	N. Wilkinson Street	M79 074	C	1930-1939	May be Eligible	NA	NA	Craftsman - Elements	Bungalow - Hip	Single Family Residential
325	3	NA	940	N. Wilkinson Street	M79 075	C	1940-1949	May be Eligible	NA	NA	Craftsman - Elements	Bungalow - Front Gabled	Single Family Residential
326	4	NA	945	N. Wilkinson Street	M80 047	C	1930-1939	Not Eligible	NA	NA	No Academic Style	Hall-Parlor	Single Family Residential
327	3	NA	960	N. Wilkinson Street	M79 076	NC	2003	Not Eligible	NA	NA	NA	NA	Commercial

**Attachment 2: Inventory of Resources Identified during the 1998 Historic Resource Survey of the City of Milledgeville and Resurveyed in the 2010 North Milledgeville Survey**

**City of Milledgeville Historic Resources Survey, 1998**

Prepared by Community Preservation Partners

for

Milledgeville Historic Preservation Commission

**North Milledgeville Historic Resources Survey, 2010**

Prepared by Environmental Corporation of America

for

Georgia Historic Preservation Division

The inventory includes the 1998 survey ID and NAHRGIS ID numbers, the corresponding 2010 ECA survey and NAHRGIS ID numbers, address and street, parcel number, approximate construction date, and National Register eligibility resurvey determination.



**ENVIRONMENTAL CORPORATION OF AMERICA**

ENVIRONMENTAL | GEOTECHNICAL | WETLANDS | ECOLOGY | CULTURAL RESOURCES

Previous Survey ID No. (1998)	Previous NAHRGIS Resource ID No. (1998)	ECA Resource ID (2010 Resurvey)	New NAHRGIS ID (2010 Resurvey)	Address	Street	Parcel Number	Construction Date	NR Eligibility Resurvey Determination
BL-M-401	773	23	227729	408	N. Clark Street	M59 065	1920-1929	Eligible
BL-M-402	774	25	227556	430	N. Clark Street	M59 062	1920-1929	May be Eligible
BL-M-403	775	26	227555	444	N. Clark Street	M59 060	1940-1949	Eligible
BL-M-412	784	240	227791	329	W. Thomas Street	M59 089	1940-1949	Eligible
BL-M-413	785	241	227792	341	W. Thomas Street	M59 090	1940-1949	May be Eligible
BL-M-414	786	242	227808	351	W. Thomas Street	M59 069	1940-1949	Not Eligible
BL-M-415	787	181	227768	548	N. Liberty Street	M59 082	1910-1919	Eligible
BL-M-416	788	195	227751	536 & 542	N. Liberty Street	M59 060	1920-1929	Eligible
BL-M-417	789	176	227789	500	N. Liberty Street	M59 085	1940-1949	Not Eligible
BL-M-418	790	194	227790	440 (or 450)	N. Liberty Street	M59 086	1910-1919	Eligible
BL-M-419	791	304	227848	510	N. Wilkinson Street	M59 118	1940-1949	Eligible
BL-M-421	793	NA	NA	141	W. Thomas Street	M59 131	NA	Demolished
BL-M-422	794	299	227868	411	N. Wilkinson Street	M59 129	1910-1919	Eligible
BL-M-423	795	247	228049	130	E. Thomas Street	M59 139	1910-1919	May be Eligible
BL-M-426	798	109	230068	120	W. Hall Street	M81 001	1870-1879	Eligible
BL-M-427	799	275	230088	622	N. Wayne Street	M81 004	1930-1939	May be Eligible
BL-M-428	800	271	230108	606	N. Wayne Street	M81 006	1900-1909	May be Eligible
BL-M-429	801	269	230128	600	N. Wayne Street	M81 007	1930-1939	May be Eligible
BL-M-430	802	NA	NA	141	E. Charlton Street	M58 030	NA	Demolished
BL-M-431	803	149	228019	540	N. Jefferson Street	M81 032	1890-1899	Eligible
BL-M-432	804	147	228021	530	N. Jefferson Street	M81 033	1910-1919	May be Eligible
BL-M-433	805	144	228023	520	N. Jefferson Street	M81 034	1920-1929	Not Eligible
BL-M-435	807	270	230434	601	N. Wayne Street	M81 023	1870-1879	Eligible
BL-M-436	808	89	230348	121	E. Hall Street	M81 012	1920-1929	Eligible
BL-M-437	809	90	230388	131	E. Hall Street	M81 013	1920-1929	Eligible
BL-M-438	810	92	230389	141	E. Hall Street	M81 014	1910-1919	Eligible
BL-M-439	811	12	230489	260	W. Charlton Street	M81 045	1930-1939	Eligible
BL-M-440	812	11	230508	250	W. Charlton Street	M81 045	1930-1939	Not Eligible
BL-M-441	813	9	230548	230	W. Charlton Street	M81 047	1920-1929	Eligible
BL-M-442	814	8	230569	220	W. Charlton Street	M81 048	1890-1899	May be Eligible
BL-M-443	815	153	230570	611	N. Jefferson Street	M81 050	1890-1899	Eligible
BL-M-444	816	156	230574	631	N. Jefferson Street	M81 052	1880-1889	Eligible
BL-M-445	817	157	230588	641	N. Jefferson Street	M81 053	1910-1919	Not Eligible
BL-M-446	818	158	230468	651	N. Jefferson Street	M81 054	1900-1909	Eligible
BL-M-456	828	137	228088	401	N. Jefferson Street	M82 003	1910-1919	May be Eligible
BL-M-650	1024	50	NA	831	N. Clark Street	M58 120	1940-1949	Eligible
BL-M-651	1025	49	NA	821	N. Clark Street	M58 119	1940-1949	May be Eligible
BL-M-652	1026	38	228489	700	N. Clark Street	M58 066	1939	Eligible
BL-M-653	1027	37	228688	610	N. Clark Street	M58 063	1930-1939	May be Eligible
BL-M654	1028	18	228708	411	W. Charlton Street	M58 060	1920-1929	May be Eligible
BL-M-655	1029	22	228709	441	W. Charlton Street	M58 057	1910-1919	Eligible
BL-M-657	1031	78	228728	651	N. Columbia Street	M58 052	1910-1919	Eligible
BL-M-658	1032	19	227549	422	W. Charlton Street	M58 081	1940-1949	Eligible
BL-M-659	1033	20	227548	430	W. Charlton Street	M58 082	1940-1949	Eligible
BL-M-660	1034	21	227168	440	W. Charlton Street	M58 083	1930-1939	Eligible
BL-M-661	1035	188	229989	650	N. Liberty Street	M58 090	1890-1899	Eligible
BL-M-662	1036	186	230008	640	N. Liberty Street	M58 089	1930-1939	Eligible
BL-M-663	1037	183	230028	630	N. Liberty Street	M58 087	1930-1939	May be Eligible
BL-M-664	1038	118	229589	251	W. Hall Street	M58 141	1875-1884	Eligible
BL-M-666	1040	187	230148	645	N. Liberty Street	M58 143	1910-1919	May be Eligible

Previous Survey ID No. (1998)	Previous NAHRGIS Resource ID No. (1998)	ECA Resource ID (2010 Resurvey)	New NAHRGIS ID (2010 Resurvey)	Address	Street	Parcel Number	Construction Date	NR Eligibility Resurvey Determination
BL-M-667	1041	115	230188	240	W. Hall Street	M58 153	1910-1919	Eligible
BL-M-668	1042	233	230309	610	Simmons Avenue	M58 147	1920-1929	May be Eligible
BL-M-669	1043	235	230288	623	Simmons Avenue	M58 157	1920-1929	Not Eligible
BL-M-670	1044	236	230289	631	Simmons Avenue	M58 156	1910-1919	May be Eligible
BL-M-671	1045	237	230308	641	Simmons Avenue	M58 155	1920-1929	Eligible
BL-M-672	1046	112	230248	210	W. Hall Street	M58 167	1885-1894	Eligible
BL-M-673	1047	313	NA	816	N. Wilkinson Street	M80 014	1930-1939	May be Eligible
BL-M-674	1048	315	NA	824	N. Wilkinson Street	M80 013	1920-1929	Eligible
BL-M-675	1049	317	NA	840	N. Wilkinson Street	M80 011	1910-1919	Eligible
BL-M-676	1050	321	NA	852	N. Wilkinson Street	M80 009	1940-1949	Eligible
BL-M-677	1051	319	NA	849	N. Wilkinson Street	M80 026	1880-1889	May be Eligible
BL-M-679	1053	210	NA	110	W. Mitchell Street	M80 030	1920-1929	Eligible
BL-M-680	1054	249	NA	121	W. Walton Street	M80 036	1930-1939	Eligible
BL-M-681	1055	NA	NA	131	W. Walton Street	M80 037	NA	Demolished
BL-M-682	1056	252	NA	151	W. Walton Street	M80 039	1930-1939	May be Eligible
BL-M-683	1057	251	NA	151	W. Walton Street	M80 039	1920-1929	Eligible
BL-M-684	1058	198	NA	120	W. Martin Luther King Jr. Drive	M80 050	1920-1929	May be Eligible
BL-M-685	1059	295	NA	970	N. Wayne Street	M80 052	1920-1929	Eligible
BL-M-686	1060	290	NA	920	N. Wayne Street	M80 054	1880-1889	Not Eligible
BL-M-687	1061	283	229808	741	N. Wayne Street	M80 082	1880-1889	Eligible
BL-M-688	1062	88	229748	120	E. Hall Street	M80 086	1910-1919	Eligible
BL-M-689	1063	91	229728	140	E. Hall Street	M80 087	1890-1899	Eligible
BL-M-690	1064	93	229708	150	E. Hall Street	M80 088	1890-1899	Eligible
BL-M-691	1065	86	229688	100	E. Hall Street	M80 089	1930-1939	Eligible
BL-M-692	1066	205	NA	115	E. Martin Luther King Jr.	M80 069	1900-1909	Eligible
BL-M-693	1067	168	NA	910	N. Jefferson Street	M80 073	1900-1909	Eligible
BL-M-694	1068	287	NA	901	N. Wayne Street	M80 059	1890-1899	Eligible
BL-M-695	1069	289	NA	911	N. Wayne Street	M80 060	1890-1899	Eligible
BL-M-696	1070	291	NA	921	N. Wayne Street	M80 062	1885-1894	Eligible
BL-M-697	1071	292	NA	931	N. Wayne Street	M80 063	1920-1929	Eligible
BL-M-698	1072	294	NA	961	N. Wayne Street	M80 065	1880-1889	Eligible
BL-M-699	1073	296	NA	971	N. Wayne Street	M80 066	1940-1949	May be Eligible
BL-M-700	1074	264	228488	224	E. Walton Street	M80 093	1880-1889	Eligible
BL-M-755	1129	65	NA	936 1/2	N. Clark Street	M57 104	1940-1949	Not Eligible
BL-M-756	1130	53	NA	840	N. Clark Street	M57 114	1940-1949	Eligible

**Attachment 3: General Descriptions of Common Architectural Types Identified within the  
North Milledgeville Survey Area**



**ENVIRONMENTAL CORPORATION OF AMERICA**

ENVIRONMENTAL | GEOTECHNICAL | WETLANDS | ECOLOGY | CULTURAL RESOURCES

## Glossary of Common Architectural Descriptions and Types<sup>25</sup>

<b>Bargeboard</b>	Projecting boards placed against the incline of the gable of a building and hiding the ends of the horizontal roof timbers; sometime decorated.
<b>Bay Window</b>	Projecting, often three-sided window.
<b>Board and Batten Siding</b>	Consisting of vertical application of boards, trimmed by thin wood strips.
<b>Baluster/Balustrade</b>	Small, bulging, vase-shaped column. A series of these is called a balustrade and may form a porch railing.
<b>Bungalow</b>	Front-gabled home with low-slanting roof and similarly-roofed porch. May also have projecting eaves, battered porch columns, and open-gabled porch. Brick or wood. Prominent style between 1910 and 1925. Called Arts and Crafts style.
<b>Central Hall Cottage</b>	Residential type consisting of central hallway or passageway between two. Only one room deep. Most frequently features gabled roof and exterior end chimneys on both ends. Most examples built between 1830 and 1930 and appearing on farmsteads and principal residential streets in Georgia's towns.
<b>Clapboard</b>	A long thin board, thicker on one edge than the other, used in covering the outer walls of buildings; of or made of clapboard. Describe as either <i>narrow</i> or <i>wide</i> . Wide is often more recent and may be vinyl or aluminum.
<b>Classic Column</b>	A column with pronounced capital (top) and a base (bottom).
<b>Clipped Gable</b>	A gable roof in which the upper portion is hipped, or inclined toward the ridgeline, forming a small triangle of roof surface. Also called a jerkinhead roof.

---

<sup>25</sup> Definitions retrieved from multiple architectural field guides and glossaries including Georgia Historic Preservation Divisions [Historic House Types in Georgia](#).





<b>Community Store</b>	Found in rural Georgia and in residential neighborhoods on fringes of small towns. Typically general merchandise stores, front-gabled, normally symmetrical – a central entrance flanked by windows. Popular between the 1890s and 1930s.
<b>Corbel, Corbelling</b>	Stepped arrangements of stones or bricks, with each course projecting beyond the one below. Seen at rooflines of flat-roofed buildings, especially commercial buildings.
<b>Corner Window</b>	Unique window type seen in historic dwellings in Lafayette. It is window placed at a 90 degree angle on the exterior corner of a front façade.
<b>Course</b>	Row of laid brick or stone.
<b>Cornice</b>	Any prominent, projecting molded feature surmounting a wall, doorway, or other construction. Most often seen on commercial buildings.
<b>Cross Gable</b>	Multiple gables facing both front and sides.
<b>Cut-away Porch</b>	Porch that is located within the main section of the dwelling. Also called recessed or inset.
<b>Dentils</b>	A series of closely spaced small rectangular blocks used at the cornice, especially in classical architecture. Often seen in brick Italianate commercial architecture.
<b>Dormer Window</b>	A small gabled or shed-roofed window projecting from a roof.
<b>Double-Hung Window</b>	A window having two vertical sashes, each closing a different part of the opening.
<b>Double Pen</b>	House type consisting of two rooms, typically square. Gabled roofs are the most common. Most constructed between the 1870s and 1930s.
<b>Double Shotgun</b>	A two-family dwelling consisting of two shotgun houses side by side with no openings in the shared party wall. Usually single hipped or gabled roof covering both sections. Common during late 19 <sup>th</sup> and early 20 <sup>th</sup> centuries.



<b>English Cottage</b>	A picturesque house type usually found with English Vernacular Revival stylistic details. Typically feature cross-gabled massing and front chimney. Massing is compact in a square or rectangular block. Secondary gable-front or recessed opening may mark the entry. Very popular among middle-class Georgians in the 1930s and 1940s.
<b>Extended Hall-Parlor</b>	House type with long, rectangular shape with façade in the narrow end, but no recessed front porch. Three or more rooms deep with hipped or gabled roof. Most examples from the 1920s and 1930s.
<b>Façade</b>	The front of building, especially an imposing or decorative one. Most often used in reference to commercial buildings.
<b>Fanlight</b>	A semicircular window with radiating glazing bars suggesting a fan. Often over a door.
<b>Foursquare</b>	Boxy, two-story house, hipped roof with dormer(s). Popular in early 1900s.
<b>Frieze</b>	A decorative, often carved, band near the top of a wall; most often seen in commercial architecture. In Victor, some porches are decorated with a wood, spindle-work frieze.
<b>Front Gabled</b>	Principle gable faces front of the property, toward the street.
<b>Gable</b>	Roof with two sloping sides that meet at the top, forming a triangular shape.
<b>Gable End</b>	End of roof under gable, used to describe things found under the roof gable, such as fishscale shingling in gable end or sunburst in gable end.
<b>Gabled L</b>	L-shaped floor plan with a gable at each outside end.
<b>Gabled Wing Cottage</b>	House type common between 1875-1915. Consists of a T- or L-shaped plan with a gabled roof. A gable-front is located at one end of a recessed wing that is parallel to the façade. The front door, located in the recessed wing, may lead into a hallway or directly into the room in the wing.



<b>Gambrel Roof</b>	A four-sided gable, often associated with American barn. May be front-, side-, or cross-gabled.
<b>Half-Timbering</b>	Linear, decorative woodworking applied over stucco to imitate English half-timbering, which consisted of wooden structural supports filled in.
<b>Hall Parlor</b>	House type consisting of two unequal rooms. Entry into the larger of the two rooms. Typically gabled with one or two exterior end-chimneys. Most common between the 1850s and 1930s.
<b>Hipped Roof</b>	Pyramid shape, generally seen on hipped box or Foursquare house. Truncated hip.
<b>I-House</b>	Rare house type in Georgia with examples built in the 1840s-1850s and 1870s-1880s. One room deep and two rooms wide. Various floor plans determine the subtype: central hallway, hall-parlor, double-pen, and saddlebag.
<b>Keystone</b>	Stone inserted in apex (top) of arch.
<b>Lap Siding</b>	Siding composed of overlapping, horizontal strips, which may be wood, vinyl, or aluminum.
<b>Lintel</b>	The upper horizontal terminate of doors and windows.
<b>Lite</b>	Window pane, used to describe number and placement of panes in a window, such as 2/2 or 6/1.
<b>Minimal Cottage</b>	Also called Minimal Ranch. Basic house in America following World War II. These houses have small footprint, are one-story with a steeply pitched roof. A detached garage is common. Historical detailing is minimal and mixed used of materials common.
<b>New South Cottage</b>	Popular house type for upper-middle-class Georgians between the 1890s and 1920s. Resembles the Queen Anne cottage with its central square mass. Usually consists of hipped roof and gabled projections. Most distinguishing feature is emphasis on symmetry, particularly the central hallway plan flanked by pairs of rooms, one or both which might project forward.



<b>Parapet</b>	Low wall used at edge of roof.
<b>Pediment</b>	A low triangular gable outlined by a horizontal cornice below and sloping cornices above; a feature resembling this, used to crown an opening, monument, etc. or as decoration (such as above a window).
<b>Pier</b>	A square pillar.
<b>Pilaster</b>	A shallow pier or rectangular column, projecting only slightly from a wall, and in classical architecture, conforming with one of the orders.
<b>Pedimented Gable</b>	Roof gable with indentations at lower corners.
<b>Pyramid Roof</b>	Pyramid-shaped hipped roof with steep slopes meeting in a single point.
<b>Ranch House</b>	House type with a long, narrow, rectangular shape with or without projections. Roof is very low-pitched.
<b>Saddlebag</b>	House type consisting most often of a central chimney flanked by two rooms. Popular between 1910 and 1930.
<b>Shingle</b>	A thin piece of wood, slate, metal, or asbestos laid in overlapping rows to cover the roofs and walls of buildings. Notable when wood shingling appears in the gable end of a house or on the exterior walls. Shapes of shingles include fishscale (rounded) and variegated.
<b>Shotgun</b>	House type consisting of one room wide and two or more rooms deep, usually three. There is no hallway, and all doors typically line up front to back. Roof is usually gabled with hipped examples survive. Popular between 1870s and 1920s.
<b>Side Gabled</b>	Gable(s) perpendicular to street front. House is parallel to street.
<b>Siding</b>	Placed over exterior walls. Aluminum and vinyl siding, which are not considered as contributing the houses' integrity, are Modern siding is wider and shinier than historic wooden siding. Siding materials from the 1940s included asphalt and asbestos.



<b>Sill</b>	Horizontal piece or member beneath a window, door, or other opening.
<b>Single-Hung Window</b>	A window having a lower vertically sliding sash, and an upper, fixed portion.
<b>Spindlework</b>	Woodworking such as railings or balustrades, composed of short, turned or circular ornaments that resemble spindles.
<b>Spindlework frieze</b>	Decorative wooden band below the roof of a porch.
<b>Stucco</b>	An exterior finish for masonry or frame walls usually composed of cement, sand and hydrated lime mixed with water and laid on wet. Often considered to degrade a building's history integrity.
<b>Transom Window</b>	Window panel above a door or window.
<b>Triangular Knee Brace</b>	A supporting piece, often L-shaped, projecting from a wall to support a roof, cornice, or other item.
<b>Truncated Hip</b>	Hipped roof that terminates in a flat plane, rather than a point.
<b>Turned Porch Posts</b>	Rounded, shaped posts made by turning on a lathe.
<b>Vernacular</b>	Common style, constructed by local craftsman or home owner. Subdivided by building material: either masonry (brick, stone, stucco) or wood-frame (clapboard or dropped exterior walls). Housing sub-types based on plot plan: front-gabled, side-gabled, gabled-L, cross-gabled, hipped box.
<b>Window, Bay</b>	Projecting, often three-sided window, associated with Queen Anne style home.
<b>Window, Dormer</b>	A small gabled or shed-roofed window projecting from a roof.



**Attachment 4: 2010 North Milledgeville Historic Resources Survey –  
Natural, Archaeological, and Historic Resources Geographic Information System  
Survey Forms**



**ENVIRONMENTAL CORPORATION OF AMERICA**

ENVIRONMENTAL | GEOTECHNICAL | WETLANDS | ECOLOGY | CULTURAL RESOURCES

**NORTH MILLEDGEVILLE NEIGHBORHOOD - LISTING OF  
RESOURCES ENTERED INTO NAHRGIS**

<b>NAHRGIS #</b>	<b>ECA Resource ID</b>	<b>Block Number</b>	<b>Address</b>	<b>Street</b>
227168	21	23	440	W. Charlton Street
227548	20	23	430	W. Charlton Street
227549	19	23	422	W. Charlton Street
227550	34	23	540	N. Clark Street
227551	32	23	536	N. Clark Street
227552	31	23	530	N. Clark Street
227553	70	23	500-510	N. Clark Street
227554	27	23	450	N. Clark Street
227555	26	23	444	N. Clark Street
227556	25	23	430	N. Clark Street
227668	243	23	411	W. Thomas Street
227728	24	23	416	N. Clark Street
227729	23	23	408	N. Clark Street
227730	244	23	431	W. Thomas Street
227731	71	23	401	N. Columbia Street
227732	72	23	411	N. Columbia Street
227748	73	23	421	N. Columbia Street
227749	74	23	425	N. Columbia Street
227750	14	24	330	W. Charlton Street
227751	195	24	536 & 542	N. Liberty Street
227768	181	24	548	N. Liberty Street
227769	180	24	528	N. Liberty Street
227788	178	24	510	N. Liberty Street
227789	176	24	500	N. Liberty Street
227790	194	24	440 (or 450)	N. Liberty Street
227791	240	24	329	W. Thomas Street
227792	241	24	341	W. Thomas Street
227808	242	24	351	W. Thomas Street
227809	28	24	451	N. Clark Street
227810	30	24	519	N. Clark Street
227811	33	24	537	N. Clark Street
227812	35	24	541	N. Clark Street
227828	36	24	545	N. Clark Street
227848	304	25	510	N. Wilkinson Street
227868	299	26	411	N. Wilkinson Street
227869	300	26	417	N. Wilkinson Street
228015	4	27	131	E. Charlton Street
228018	150	27	550	N. Jefferson Street
228019	149	27	540	N. Jefferson Street
228021	147	27	530	N. Jefferson Street
228023	144	27	520	N. Jefferson Street
228028	143	27	514	N. Jefferson Street

**NORTH MILLEDGEVILLE NEIGHBORHOOD - LISTING OF  
RESOURCES ENTERED INTO NAHRGIS**

<b>NAHRGIS #</b>	<b>ECA Resource ID</b>	<b>Block Number</b>	<b>Address</b>	<b>Street</b>
228048	140	27	430	N. Jefferson Street
228049	247	27	130	E. Thomas Street
228068	246	27	120	E. Thomas Street
228069	266	27	415	N. Wayne Street
228088	137	28	401	N. Jefferson Street
228089	145	28	527	N. Jefferson Street
228108	146	28	529	N. Jefferson Street
228488	264	11	224	E. Walton Street
228489	38	12	700	N. Clark Street
228688	37	12	610	N. Clark Street
228689	16	12	401	W. Charlton Street
228708	18	12	411	W. Charlton Street
228709	22	12	441	W. Charlton Street
228728	78	12	651	N. Columbia Street
229068	79	12	701	N. Columbia Street
229069	80	12	721	N. Columbia Street
229070	81	12	757	N. Columbia Street
229071	17	12	410	W. Charlton Street
229072	41	12	740	N. Clark Street
229073	40	12	736	N. Clark Street
229088	43	13	747	N. Clark Street
229108	262	13	330	W. Walton Street
229128	260	13	320	W. Walton Street
229129	258	13	310	W. Walton Street
229148	190	13	730	N. Liberty Street
229168	122	13	327	W. Hall Street
229568	123	13	333	W. Hall Street
229569	42	13	745	N. Clark Street
229570	309	14	700	N. Wilkinson Street
229588	116	14	241	W. Hall Street
229589	118	14	251	W. Hall Street
229608	189	14	725	N. Liberty Street
229628	281	15	730	N. Wayne Street
229648	164	16	760	N. Jefferson Street
229668	160	16	720	N. Jefferson Street
229688	86	16	100	E. Hall Street
229708	93	16	150	E. Hall Street
229728	91	16	140	E. Hall Street
229748	88	16	120	E. Hall Street
229768	280	16	711	N. Wayne Street
229788	282	16	731	N. Wayne Street
229808	283	16	741	N. Wayne Street
229828	163	17	751	N. Jefferson Street
229848	129	17	200	Hitchcock Avenue
229868	161	17	731	N. Jefferson Street
229888	130	17	201	Hitchcock Avenue



**NORTH MILLEDGEVILLE NEIGHBORHOOD - LISTING OF  
RESOURCES ENTERED INTO NAHRGIS**

<b>NAHRGIS #</b>	<b>ECA Resource ID</b>	<b>Block Number</b>	<b>Address</b>	<b>Street</b>
229908	136	17	255	Hitchcock Avenue
229928	128	18	352	W. Hall Street
229948	126	18	346	W. Hall Street
229968	125	18	344	W. Hall Street
229969	121	18	326	W. Hall Street
229988	120	18	320	W. Hall Street
229989	188	18	650	N. Liberty Street
230008	186	18	640	N. Liberty Street
230009	184	18	632	N. Liberty Street
230028	183	18	630	N. Liberty Street
230048	182	18	620	N. Liberty Street
230049	196	18	609 & 613	N. Liberty Street
230068	109	20	120	W. Hall Street
230088	275	20	622	N. Wayne Street
230108	271	20	606	N. Wayne Street
230128	269	20	600	N. Wayne Street
230148	187	19	645	N. Liberty Street
230168	117	19	250	W. Hall Street
230188	115	19	240	W. Hall Street
230208	114	19	230	W. Hall Street
230228	113	19	220	W. Hall Street
230248	112	19	210	W. Hall Street
230268	232	19	605	Simmons Avenue
230269	234	19	613	Simmons Avenue
230288	235	19	623	Simmons Avenue
230289	236	19	631	Simmons Avenue
230308	237	19	641	Simmons Avenue
230309	233	19	610	Simmons Avenue
230328	185	19	635	N. Liberty Street
230348	89	21	121	E. Hall Street
230368	277	21	641	N. Wayne Street
230388	90	21	131	E. Hall Street
230389	92	21	141	E. Hall Street
230408	151	21	600	N. Jefferson Street
230428	2	21	120	E. Charlton Street
230432	1	21	110	E. Charlton Street
230434	270	21	601	N. Wayne Street
230449	276	21	631	N. Wayne Street
230468	158	22	651	N. Jefferson Street
230489	12	22	260	W. Charlton Street
230508	11	22	250	W. Charlton Street
230510	10	22	240	W. Charlton Street
230548	9	22	230	W. Charlton Street
230569	8	22	220	W. Charlton Street
230570	153	22	611	N. Jefferson Street
230572	155	22	621	N. Jefferson Street

**NORTH MILLEDGEVILLE NEIGHBORHOOD - LISTING OF  
RESOURCES ENTERED INTO NAHRGIS**

<b>NAHRGIS #</b>	<b>ECA Resource ID</b>	<b>Block Number</b>	<b>Address</b>	<b>Street</b>
230574	156	22	631	N. Jefferson Street
230588	157	22	641	N. Jefferson Street